

TIME TO EXPLORE

Cleveland Metroparks

Trails in Northeast Ohio: Concepts, Challenges, & Technology

Anthony M. Joy

Chief Information Officer

amj1@clevelandmetroparks.com



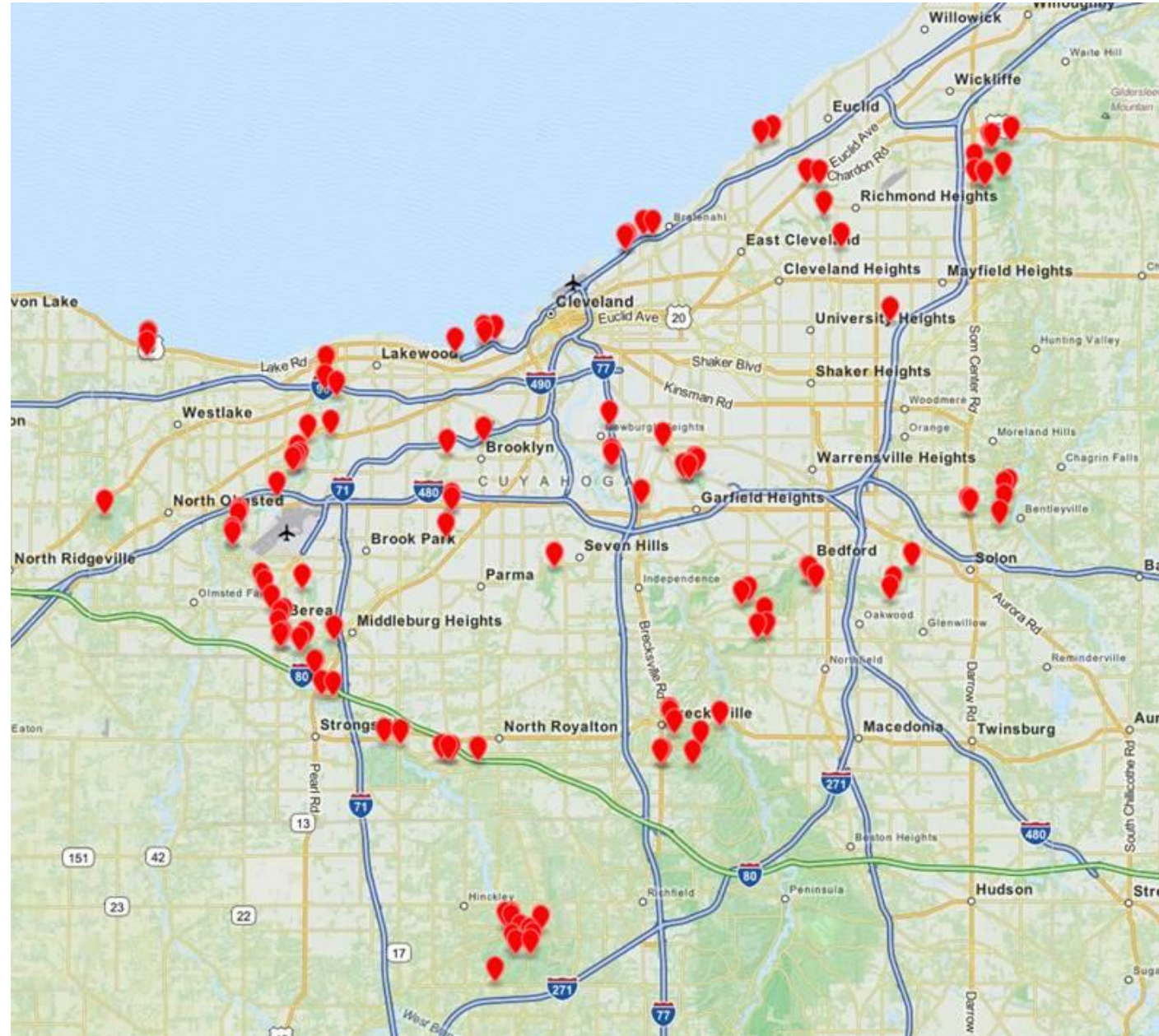
Counting

- Cars
- People
- Bikes
- Other
 - Horses
 - Dogs



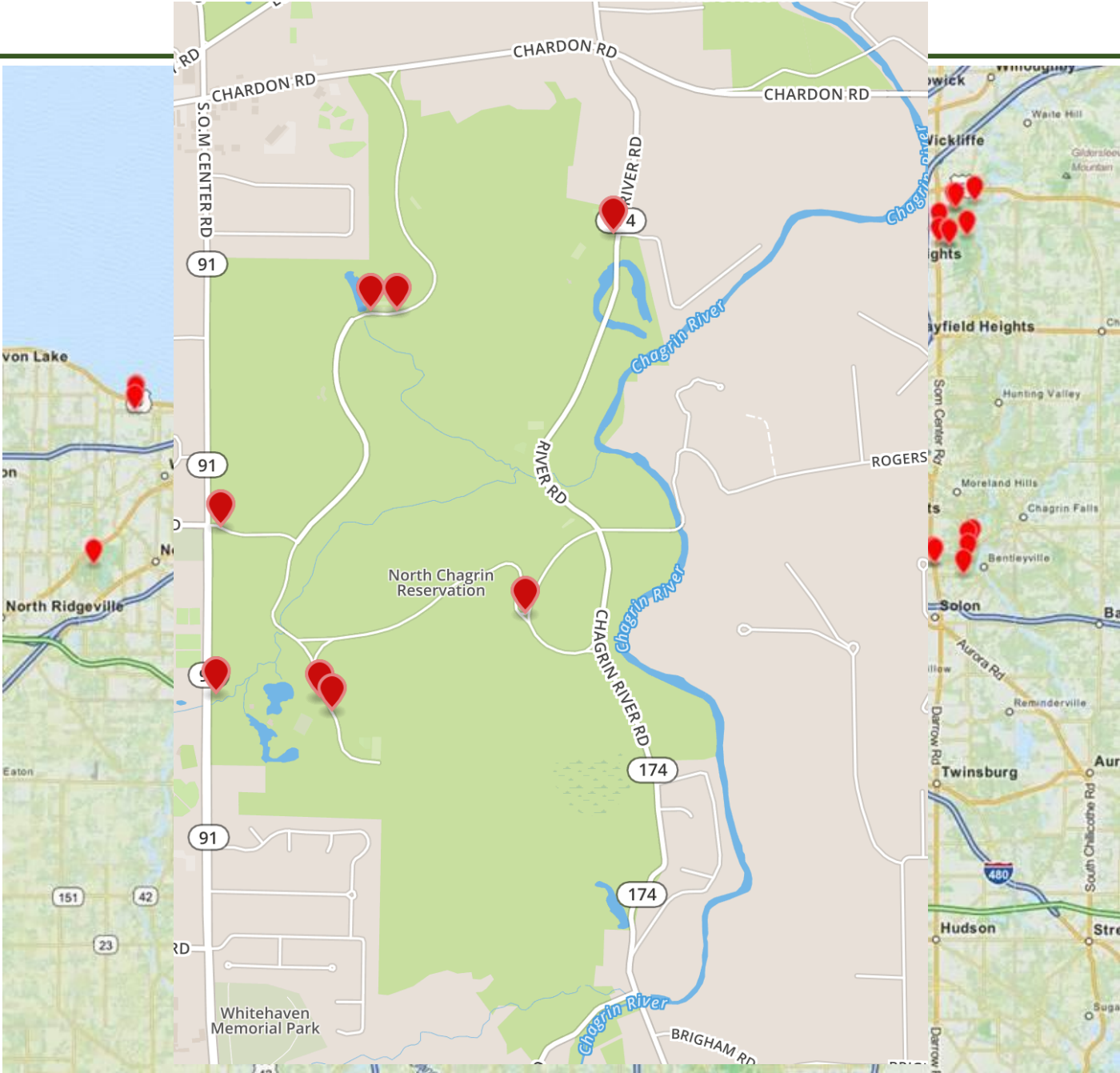
Counters

- 130 + counters
 - Largely automobile
- Various analog and digital counters
- Manual counting
- Bluetooth
- Cellular



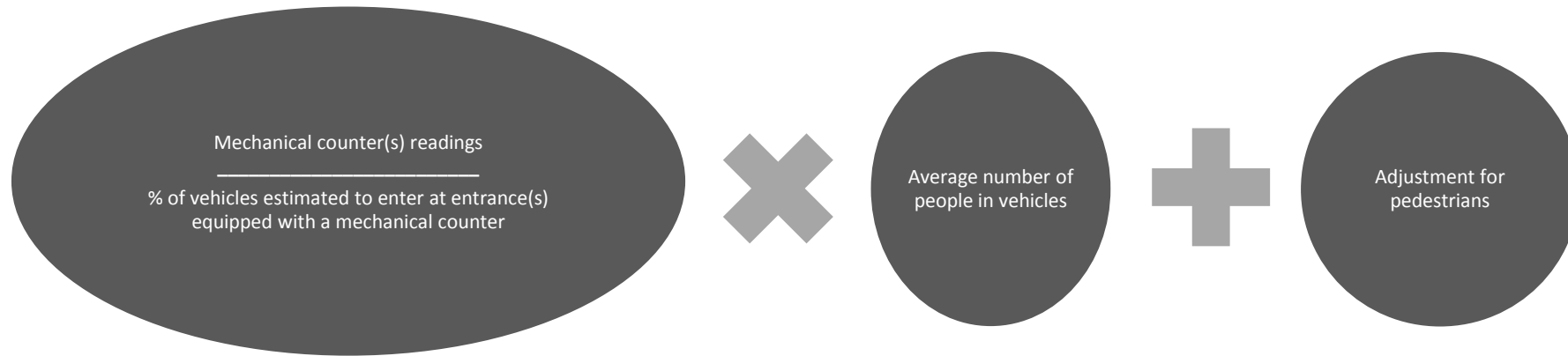
Counters

- 130 + counters
 - Largely automobile
- Various analog and digital counters
- Manual counting
- Bluetooth
- Cellular



Counting Calculation

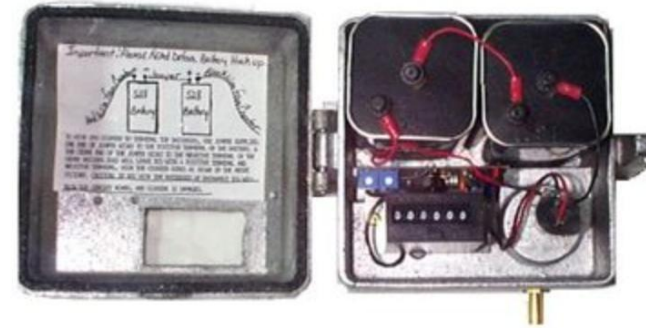
For each reservation, monthly attendance =



Inductive loop traffic counters and/or meter boxes are installed in the locations listed on the next slides; as well as, the weights assigned to each counter, based on the volume seen at each location. Many meters have weights that vary throughout the year, while some have one consistent weight. Visual observations are ongoing in an effort to keep these weights as up to date as possible.

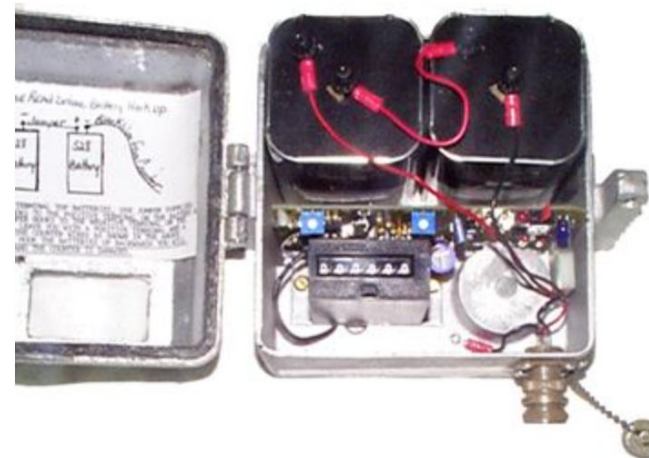
Types of Sensors

- K Hill Traffic Counters



K-Hill Model GMH Air Module Counter
(Available w/ Lexan window or solid cover)

The K-Hill Model GMH Air Module is a portable self contained six digit electromechanical cumulative counter with turnback feature, enclosed in an aluminum weatherproof housing. This counter counts 1.2 half count per axle or one count per automobile. It operates from pneumatic road tube which activates the air module to advance the counter. This counter has the capability to increase or decrease sensitivity or delay to perform for your application. This is the latest in K-Hill's solid state electronics - supplied with two six volt batteries, built in battery tester, and on/off switch. dimensions are 6"x 7"x 5" - weight 12 lbs. Counter comes complete with a vandal proof lock and carrying handle, necessary installation parts and an easy to follow instructions, less road tube. (Must be ordered separately)



Types of Sensors

- K Hill Traffic Counters
- TrafX Counters



TRAFx Vehicle Counter



TRAFx Trail Counter



Types of Sensors

- K Hill Traffic Counters
- TrafX Counters
- Eco Counters

TRAFx V6



No exte

Installation Example

1081 mm (43")

820 mm (32")

Washers
are used to
adjust the
positioning

25 mm (1")

Ground level

310 mm (12")

325 mm (12.5")

Concrete (~20L)

335 mm (13")

Types of Sensors

- K Hill Traffic Counters
- Traqx Counters
- Eco Counters
- Terabee

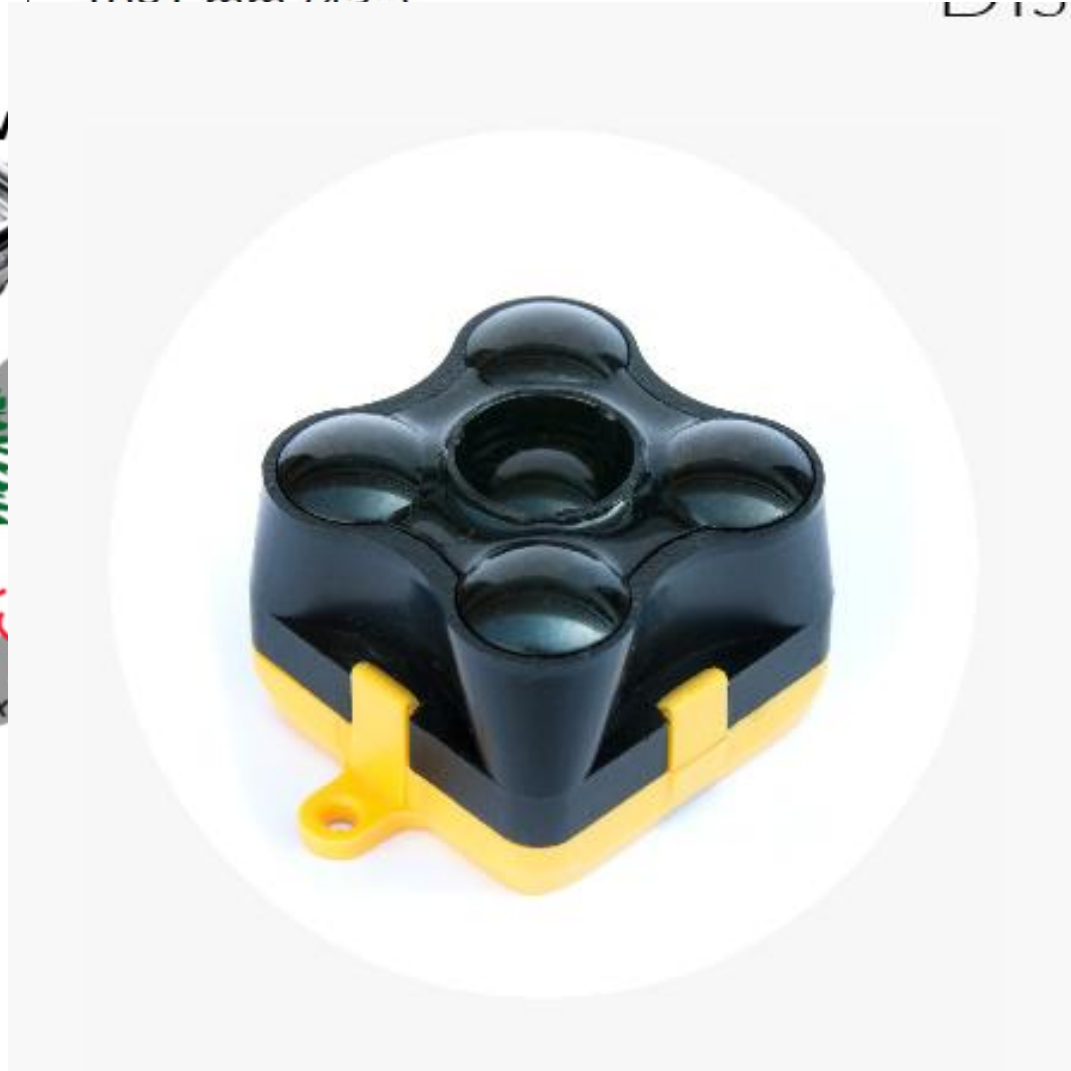
TRAFx V



No ex

Installation Example

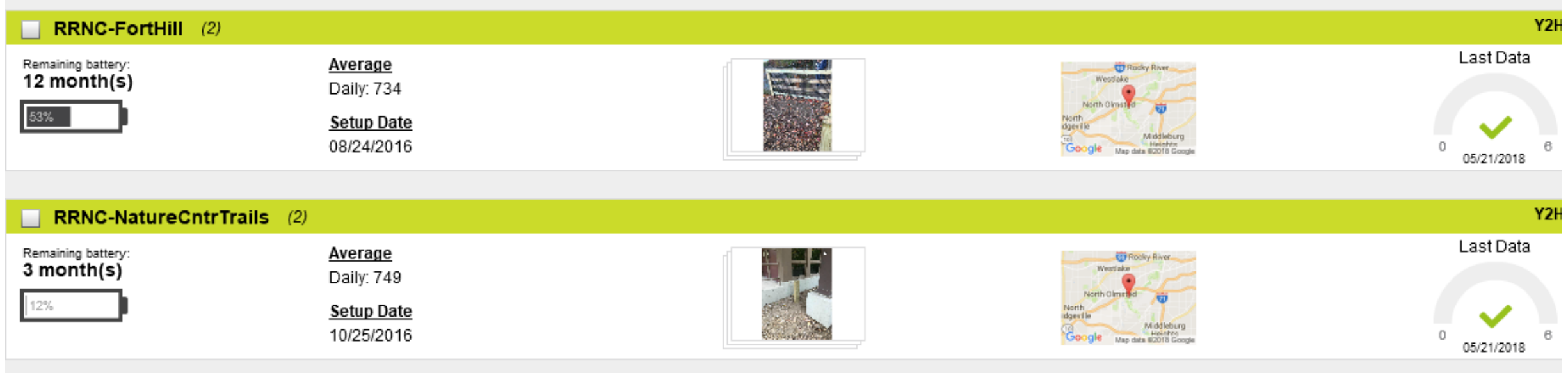
1081 mm (42")



(12.5")



Reporting

- Built In Cloud Reporting
- Manual Reporting (Research – Marketing)



Reporting

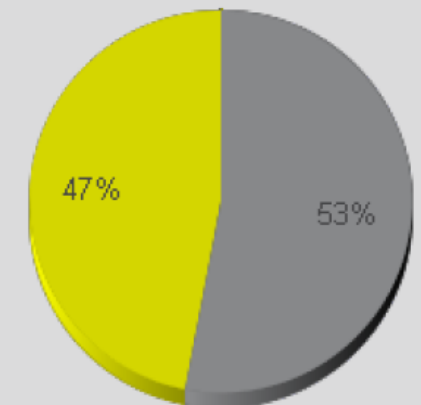
- Built In Cloud Reporting
- Manual Reporting (Research – Marketing)

RRNC-ForthHill (2)	
Remaining battery: 12 month(s) 	<u>Average</u> Daily: 734 <u>Setup Date</u> 08/24/2016
RRNC-NatureCntrTrails (2)	
Remaining battery: 3 month(s) 	<u>Average</u> Daily: 749 <u>Setup Date</u> 10/25/2016

Key Figures

- Total Traffic for the Period Analyzed: 141,853
- Daily Average: 619
Weekdays: 470 / Weekend days: 995
- Monthly Average: 18,854
- Busiest Day of the Week: Sunday
- Busiest Days of the Period Analyzed:
 1. Sunday, March 18, 2018 (2,472)
 2. Sunday, August 27, 2017 (2,246)
 3. Sunday, August 13, 2017 (2,166)
- Distribution by Direction:

- IN: 47%
- OUT: 53%



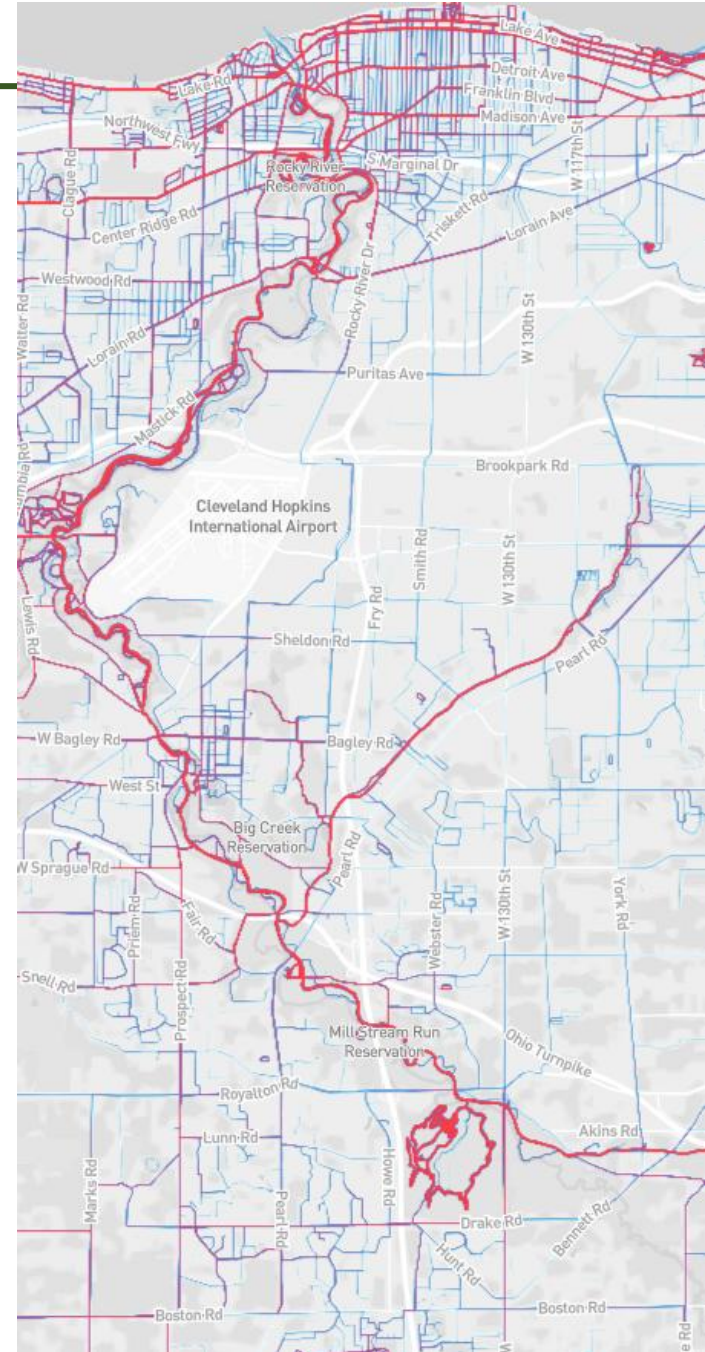
Reporting

- Biking Report
- Infrared Sensors

Year	Month	OE	Royalview	Bedford
	2016 November	441	211	89
	2016 December	593	108	49
	2017 January	945	83	27
	2017 February	655	39	43
	2017 March	1673	96	32
	2017 April	527	284	57
	2017 May	190	130	92
	2017 June	1277	830	156
	2017 July	3576	892	195
	2017 August	206	744	139
	2017 September	445	697	159
	2017 October	147	385	118
	2017 November	215	197	77
	2017 December	114	185	38
	2018 January	254	90	16
	2018 February	87	55	21

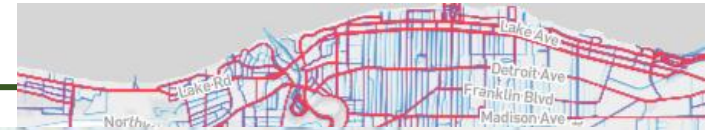
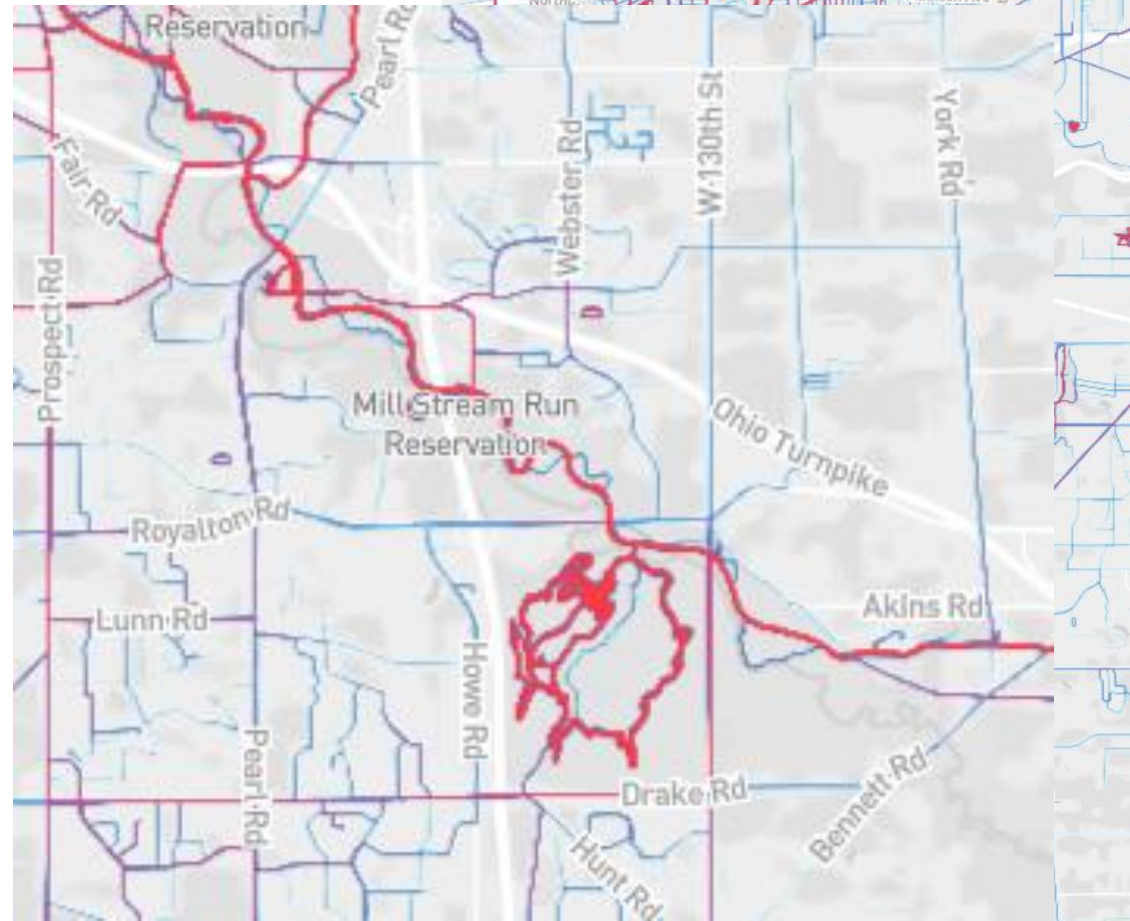
Information on Trails

- Fitness Applications
- Map My Run
- Strava:
 - Ohio Department of Transportation
- CM Mobile Applications (future versions)

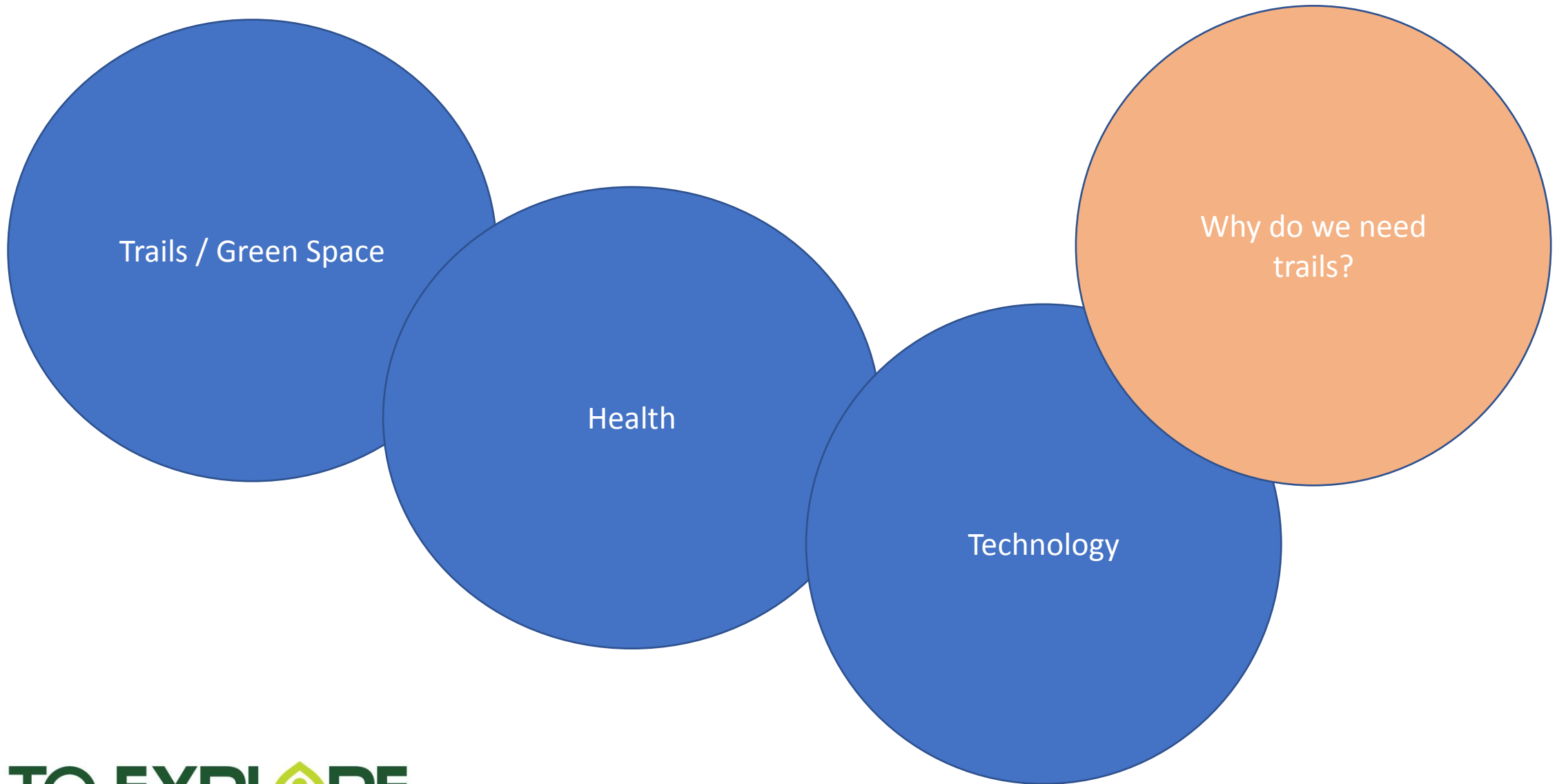


Information on Trails

- Fitness Applications
- Map My Run
- Strava:
 - Ohio Department of Transportation
- CM Mobile Applications (future versions)



Health Study

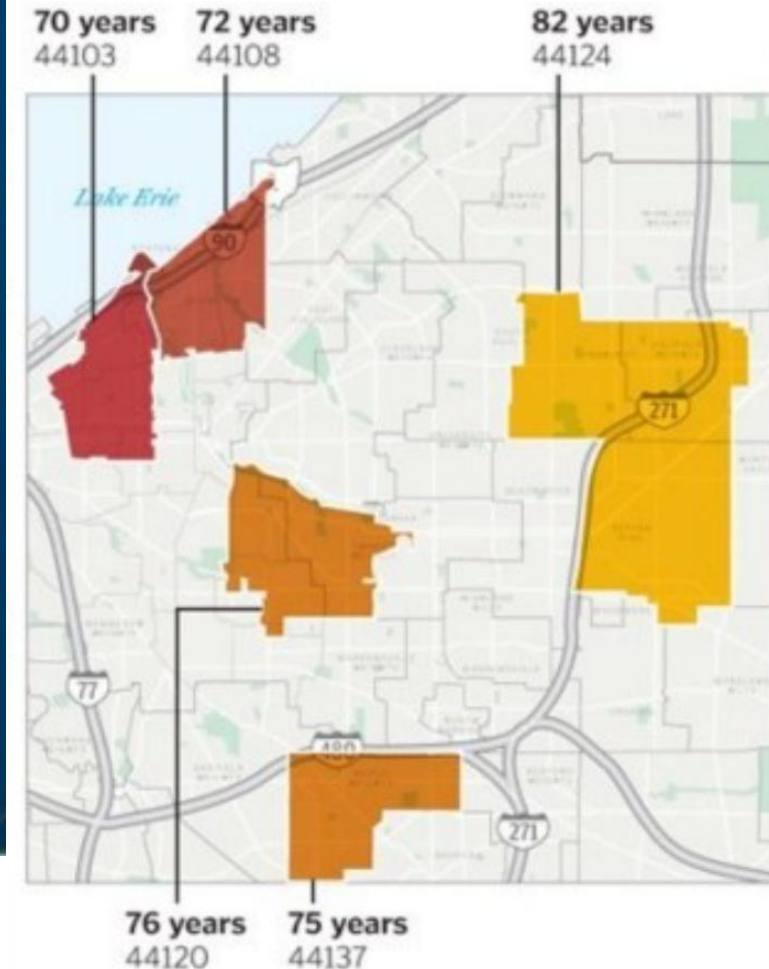


Forest Bathing

- Shinrin-yoku
 - Forest Bathing, 1982
- 3 day hike leads to NK (natural killer) cell increase (THIS IS GOOD!)
 - work to contain viral infections
- Caused by phytoncide (substance emitted by plants and trees) & lower cortisol
- Increases self-esteem, social connection, lowers stress and anxiety

Your zip code can affect your life expectancy

If you travel less than ten miles from Cleveland's northeastern neighborhoods to more affluent eastern outer-ring suburbs, life expectancy can differ by as much as 12 years.

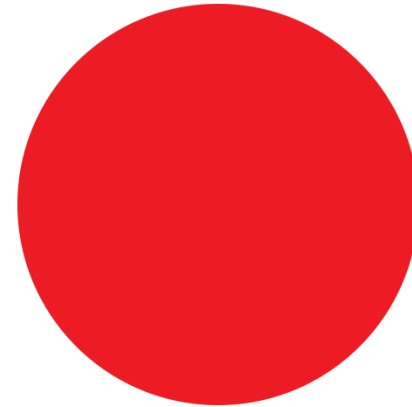


SOURCES: Virginia Commonwealth University;
Robert Wood Johnson Foundation

THE PLAIN DEALER

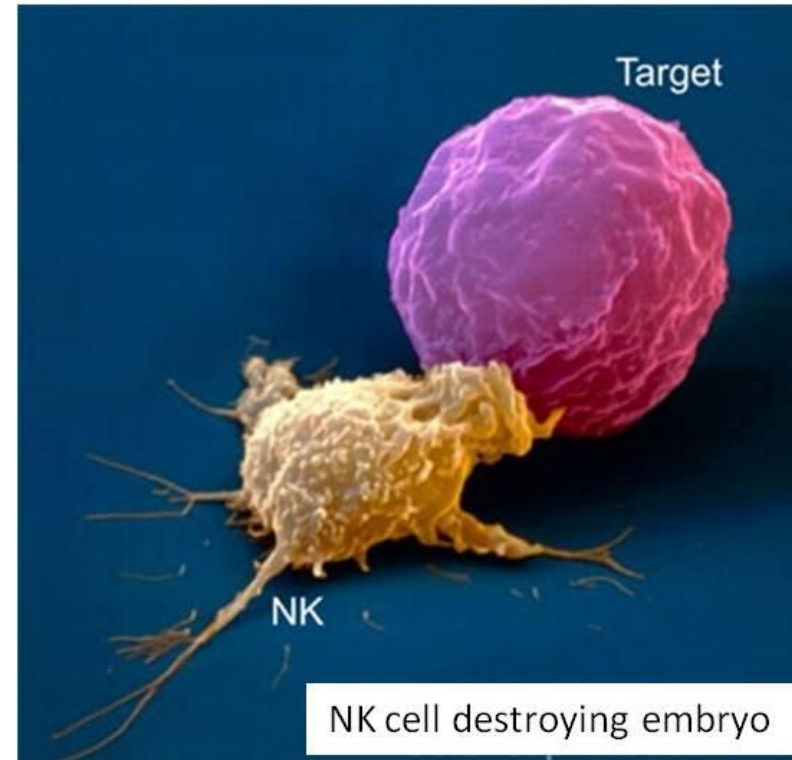
Forest Bathing

- Shinrin-yoku
 - Forest Bathing, 1982



Forest Bathing

- Shinrin-yoku
 - Forest Bathing, 1982
- 3 day hike leads to NK (natural killer) cell increase (THIS IS GOOD!)
 - work to contain viral infections
- Caused by phytoncide (substance emitted by plants and trees) & lower cortisol
- Increases self-esteem, social connection, lowers stress and anxiety

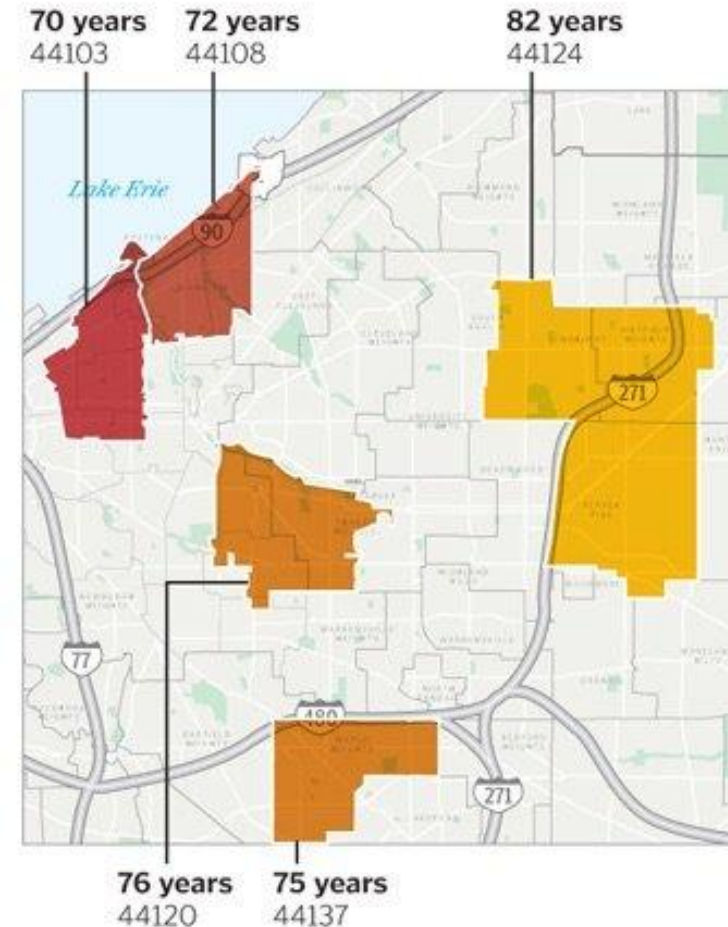


Forest Bathing

- Shinrin-yoku
 - Forest Bathing, 1982
- 3 day hike leads to NK (natural killer) cell increase (THIS IS GOOD!)
 - work to contain viral infections
- Caused by phytoncide (substance emitted by plants and trees) & lower cortisol
- Increases self-esteem, social connection, lowers stress and anxiety

Your zip code can affect your life expectancy

If you travel less than ten miles from Cleveland's northeastern neighborhoods to more affluent eastern outer-ring suburbs, life expectancy can differ by as much as 12 years.



SOURCES: Virginia Commonwealth University;
Robert Wood Johnson Foundation

THE PLAIN DEALER

Current Research

- Cleveland Metroparks Health Research Study
 - MetroHealth
- Two groups, four different days
 - Once a week for an hour for 10 weeks
 - Control group in an urban setting
- Measurements
 - Fitbits
 - Blood Pressure
 - Cortisol
 - Air Quality



Current Research

- Focus Groups (research in progress)
 - trail selection based on gender, etc.
- All studies are research based – IRB (Institutional Review Board) involving human subjects
- Studies will be published



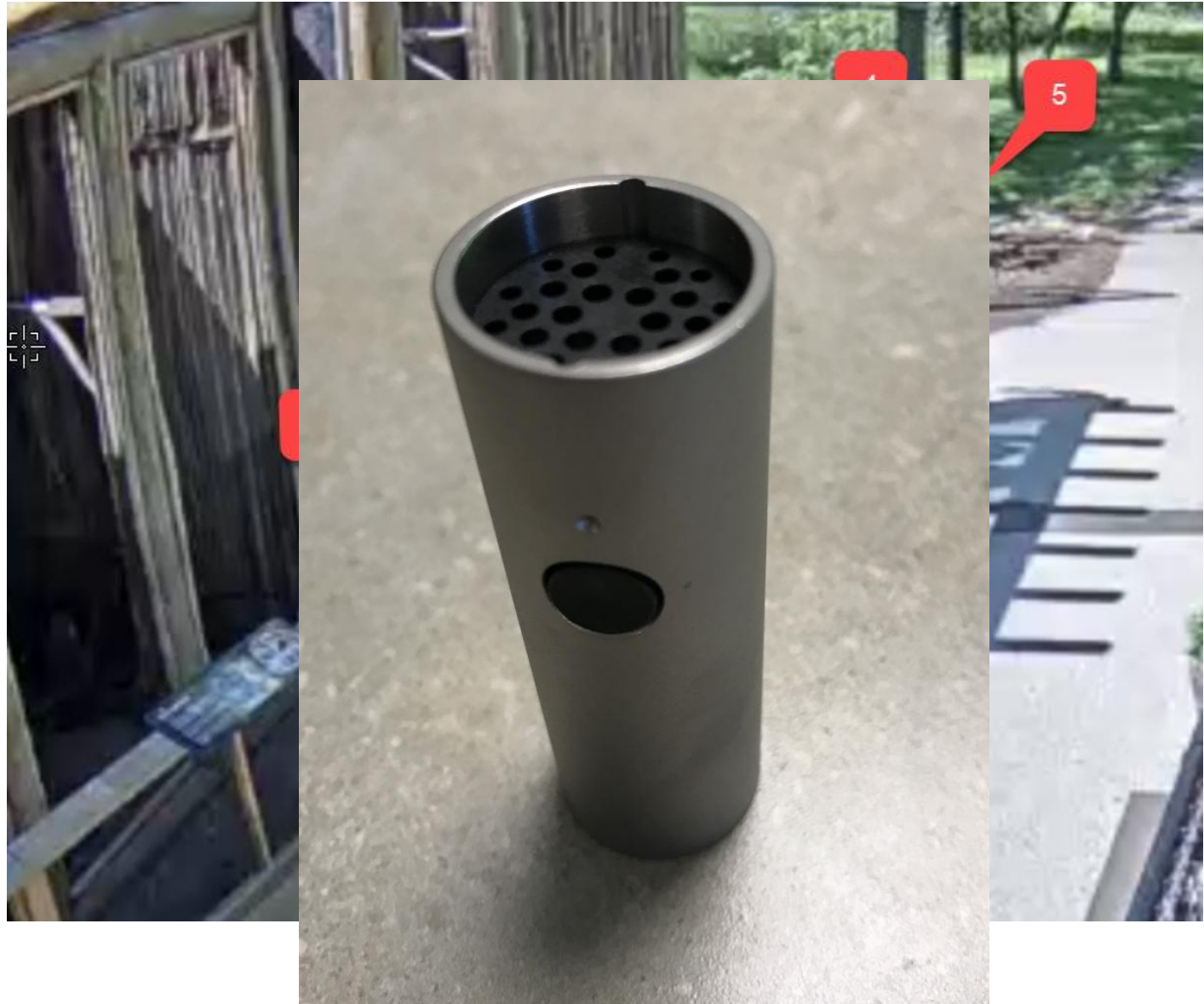
Other Types of Technology/Sensors

- Cameras



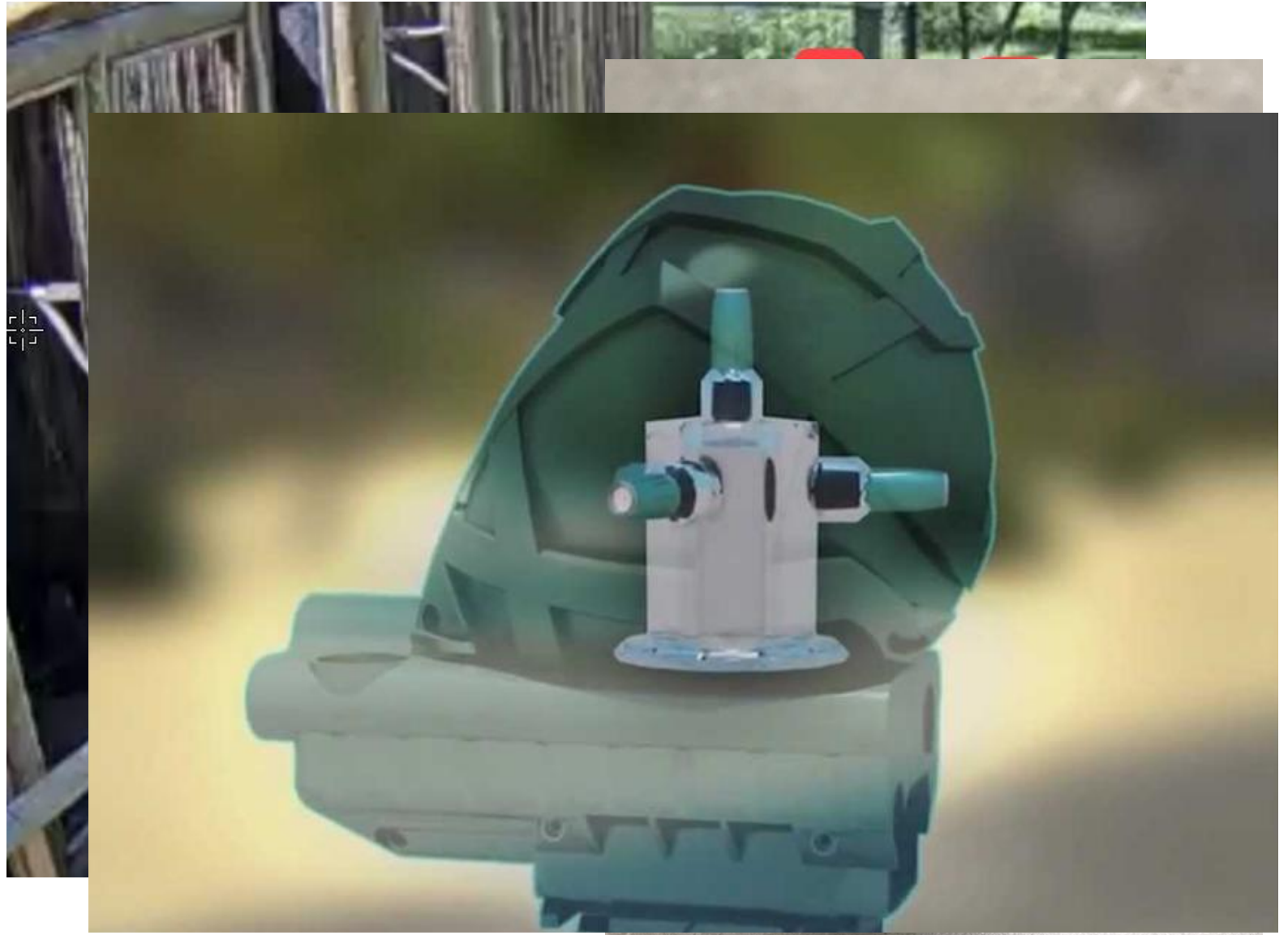
Other Types of Technology/Sensors

- Cameras
- Air Quality



Other Types of Technology/Sensors

- Cameras
- Air Quality
- IoT Sensors
 - Water Monitoring
 - Pavement Monitoring
 - Sound Monitoring
 - Gas/Spray paint Monitoring



Virtual/Augmented Reality

- Virtual Reality: Wear a headset and walk/view the trails or areas that you do not have or can't access (drone fly overs, etc.)
- Augmented Reality: Headset NOT required but is possible – hologram or artifacts over the real life image you see



Virtual/Augmented Reality Trail Tours

- ADA
- Planning & Design (bridge)
- Seasonal Changes
- Hospitals (UH Siedman Cancer Institute)



Summary - Trail Technology

Trying to answer

- Why are trails important?
- When did visitors utilize the trail(s)?
- Where did they visit?
Where should we build?
- How should we build?



TIME TO EXPLORE

Cleveland Metroparks

Trails in Northeast Ohio: Concepts, Challenges, & Technology

Anthony M. Joy

Chief Information Officer

amj1@clevelandmetroparks.com

