

Greater Cleveland Trails & Greenways Conference 2012

Trails and Greenways and Placemaking
Mayor Bruce Rinker, Mayfield Village

WELCOME TO MAYFIELD





VILLAGE OF MAYFIELD

MAYOR
BRUCE HINKER

PREPARED BY
STEPHEN HOVAVECSEK & ASSOC., INC.
CONSULTING ENGINEER & PLANNERS



CITY OF HIGHLAND HEIGHTS

LAKE COUNTY

CITY OF WILLOUGHBY HILLS

VILLAGE OF GARFIELD HILLS

CITY OF MAYFIELD HEIGHTS

GARFIELD HILLS

ISSUED: 06/01/02

ZONE MAP **VILLAGE** **OF** **MAYFIELD**

MAYOR
BRUCE PINKER

LEGEND

| RESIDENTIAL | USE DISTRICT | AREA DISTRICT |
|---|--------------|---------------|
| SINGLE FAMILY | U-1 | A-1 |
| APARTMENT HOUSE | U-3 | A-2 |
| RESTRICTED MULTI-STORY APARTMENT HOUSE | U-3AA | A-3 |
| PLANNED RESIDENTIAL DEVELOPMENT-PER 2003 ELECTION | PRD | |
| BUSINESS | | |
| LOCAL BUSINESS | | |
| MOTORIST-SERVICE | | |
| ONE STORY-OFFICE | | |
| INDUSTRIAL | | |
| OFFICE-LABORATORY | | |
| PRODUCTION-DISTRIBUTION | | |

PREPARED BY
STEPHEN HOWARDSON & ASSOC., INC.
CONSULTING ENGINEER & PLANNERS



REVISIONS
AMENDMENT NO. 1 05/18/76
AMENDMENT NO. 2 06/15/80
ELECTION, MAY 1, 1989
AMENDMENT NO. 3 12/15/90
ORDINANCE NO. 85-4 03/15/95
APPLICABLE COURT CASE NO. 3
ORDINANCE NO. 100-18 11/01/00



VILLAGE OF MAYFIELD

MAYOR
BRUCE PINKER

PREPARED BY
STEPHEN HOWANSON & ASSOC., INC.
CONSULTING ENGINEER & PLANNERS



VILLAGE OF MAYFIELD

MAYOR
BRUCE RINKER

PREPARED BY
STEPHEN HOWARD & ASSOC., INC.
CONSULTING ENGINEER & PLANNERS



VILLAGE OF MAYFIELD

MAYOR
BRUCE HAWKER

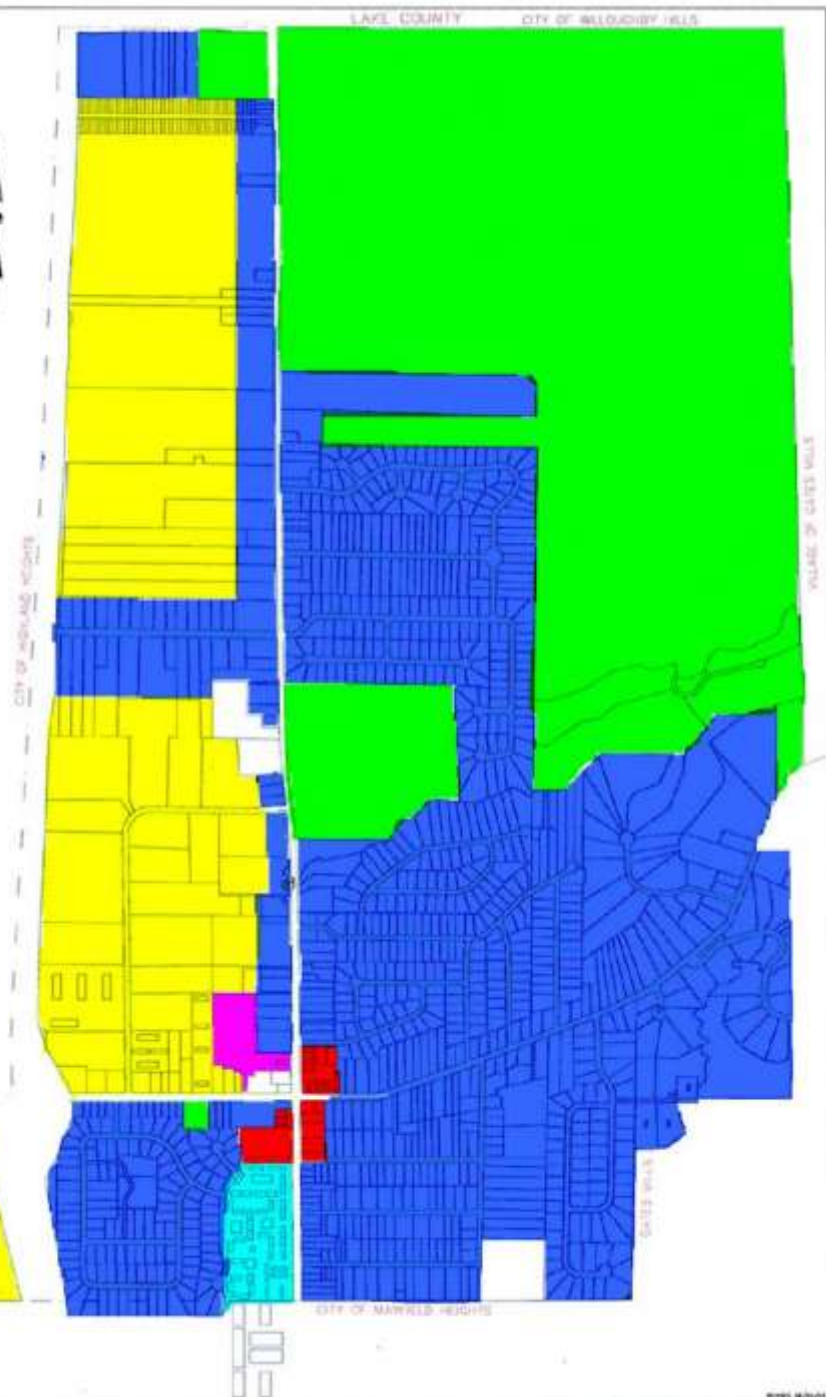
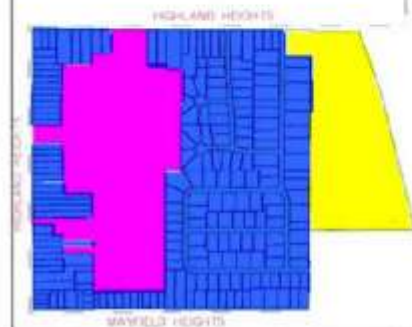
PREPARED BY
STEPHEN HOWANCER & ASSOC., INC.
CONSULTING ENGINEER & PLANNERS



VILLAGE OF MAYFIELD

MAYOR
BRUCE SINKER

PREPARED BY
STEPHEN HOWARD & ASSOC., INC.
CONSULTING ENGINEERS & PLANNERS



VILLAGE OF MAYFIELD

MAYOR
BRUCE RINKER



PREPARED BY
STEPHEN HOWANCSEK & ASSOC., INC.
CONSULTING ENGINEERS & PLANNERS



Highland Road

White Road

I-271

Warehouse - Distribution

Office - Laboratory

Residential

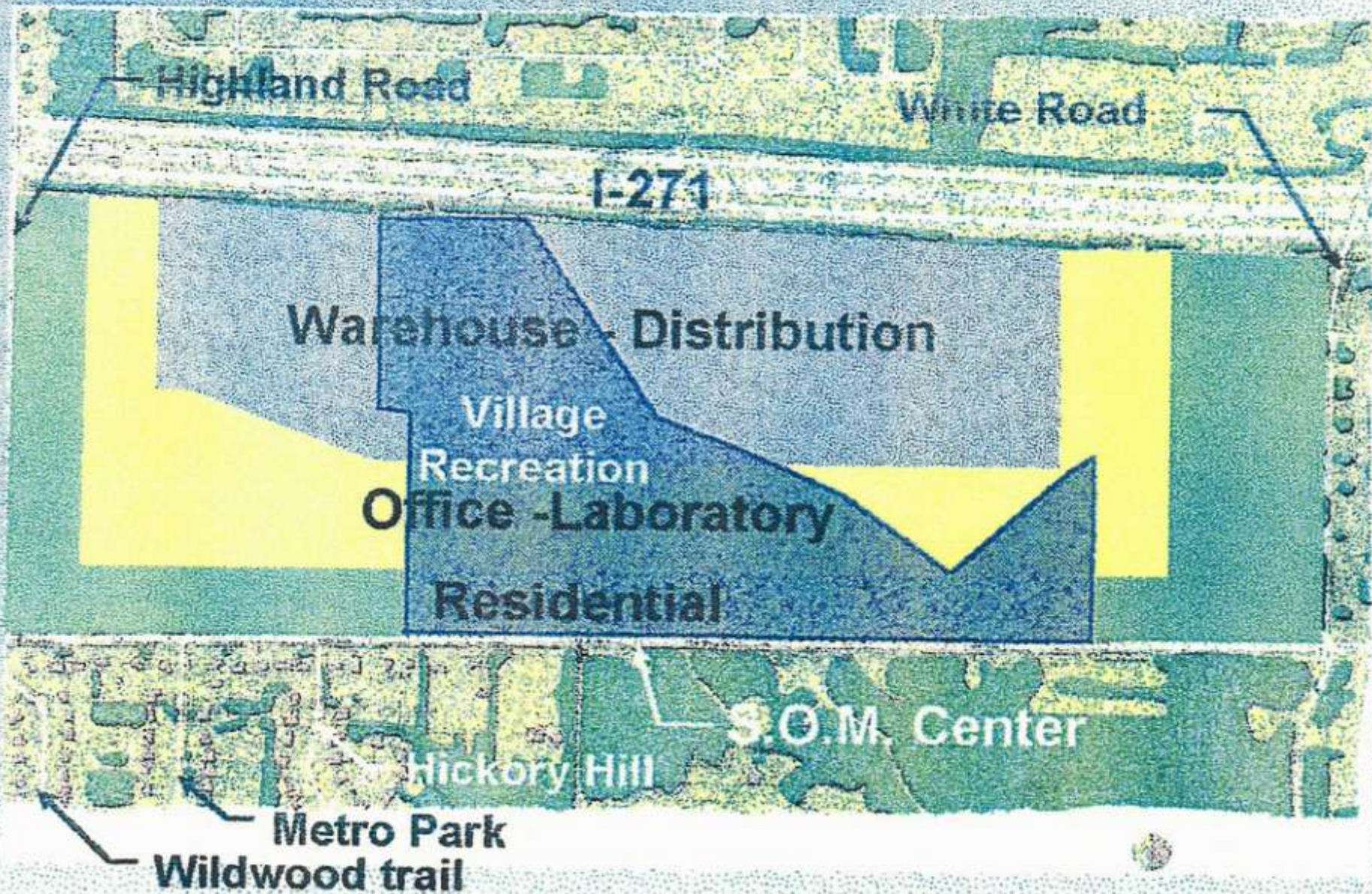
S.O.M. Center

Hickory Hill

Metro Park



Land Redistribution Improves Use



VILLAGE OF MAYFIELD

MAYOR
BRUCE RINKER

PREPARED BY
STEPHEN HOWANDECK & ASSOC., INC.
CONSULTING ENGINEER & PLANNERS



ZONE MAP **VILLAGE OF MAYFIELD**

MAYOR
BRUCE RINKER

LEGEND

| RESIDENTIAL | USE DISTRICT | AREA DISTRICT |
|---|--------------|---------------|
| SINGLE FAMILY | U-1 | A-1 |
| APARTMENT HOUSE | U-3 | A-2 |
| RESTRICTED MULTI-STORY APARTMENT HOUSE | U-3AA | A-3 |
| PLANNED RESIDENTIAL DEVELOPMENT-PER 2003 ELECTION | PND | |
| BUSINESS | | |
| LOCAL BUSINESS | | |
| MOTORIST-SERVICE | | |
| ONE STORY-OFFICE | | |
| INDUSTRIAL | | |
| OFFICE-LABORATORY | | |
| PRODUCTION-DISTRIBUTION | | |

PREPARED BY
STEPHEN HOFVANCEK & ASSOC., INC.
CONSULTING ENGINEER & PLANNERS



REVISIONS
 AMEND NORTH SIDE NO. 1 03/11/15
 HAYWARD NORTH SIDE 05/15/16
 SECTION 4, 1485 05/15/16
 AMEND NORTH SIDE NO. 2 12/11/16
 ORDINANCE NO. 89-4 01/11/16
 APPELLANT COURT CASE NO. 5 01/11/16
 W 1436, 1438, 1440 & 1442 01/11/16
 ORDINANCE NO. 200-15 11/11/16



VILLAGE OF MAYFIELD

MAYOR
BRUCE RINKER

PREPARED BY
STEPHEN HOWANICKA & ASSOC., INC.
CONSULTING ENGINEERS & PLANNERS



CITY OF MAYFIELD HEIGHTS

LAKE COUNTY

CITY OF WILLOUGHBY HILLS

VILLAGE OF GATES HILLS

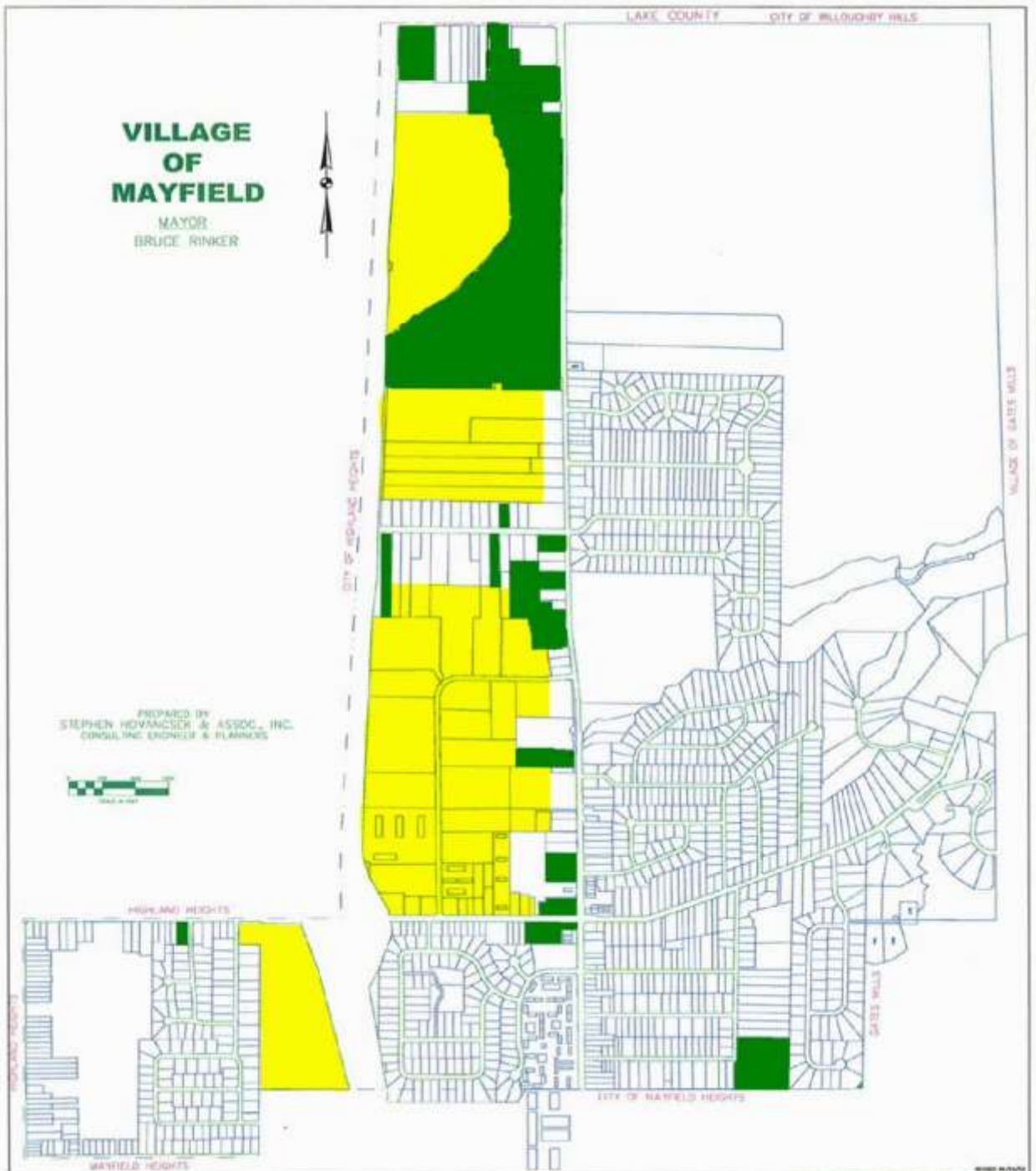
CITY OF MAYFIELD HEIGHTS

GATES HILLS

VILLAGE OF MAYFIELD

MAYOR:
BRUCE RINKER

PREPARED BY
STEPHEN HOVAVACER & ASSOC., INC.
CONSULTING ENGINEERS & PLANNERS



VILLAGE OF MAYFIELD

MAYOR
BRUCE RINKER

PREPARED BY
STEPHEN HOWARDSON & ASSOC., INC.
CONSULTING ENGINEER & PLANNERS



VILLAGE OF MAYFIELD

MAYOR
BRUCE RINKER



PREPARED BY
STEPHEN HOWARDECK & ASSOC., INC.
CONSULTING ENGINEER & PLANNERS



VILLAGE OF MAYFIELD

MAYOR
BRUCE RINKER

PREPARED BY
STEPHEN HOWANCZEK & ASSOC., INC.
CONSULTING ENGINEER & PLANNERS



CITY OF HIGHLAND HEIGHTS

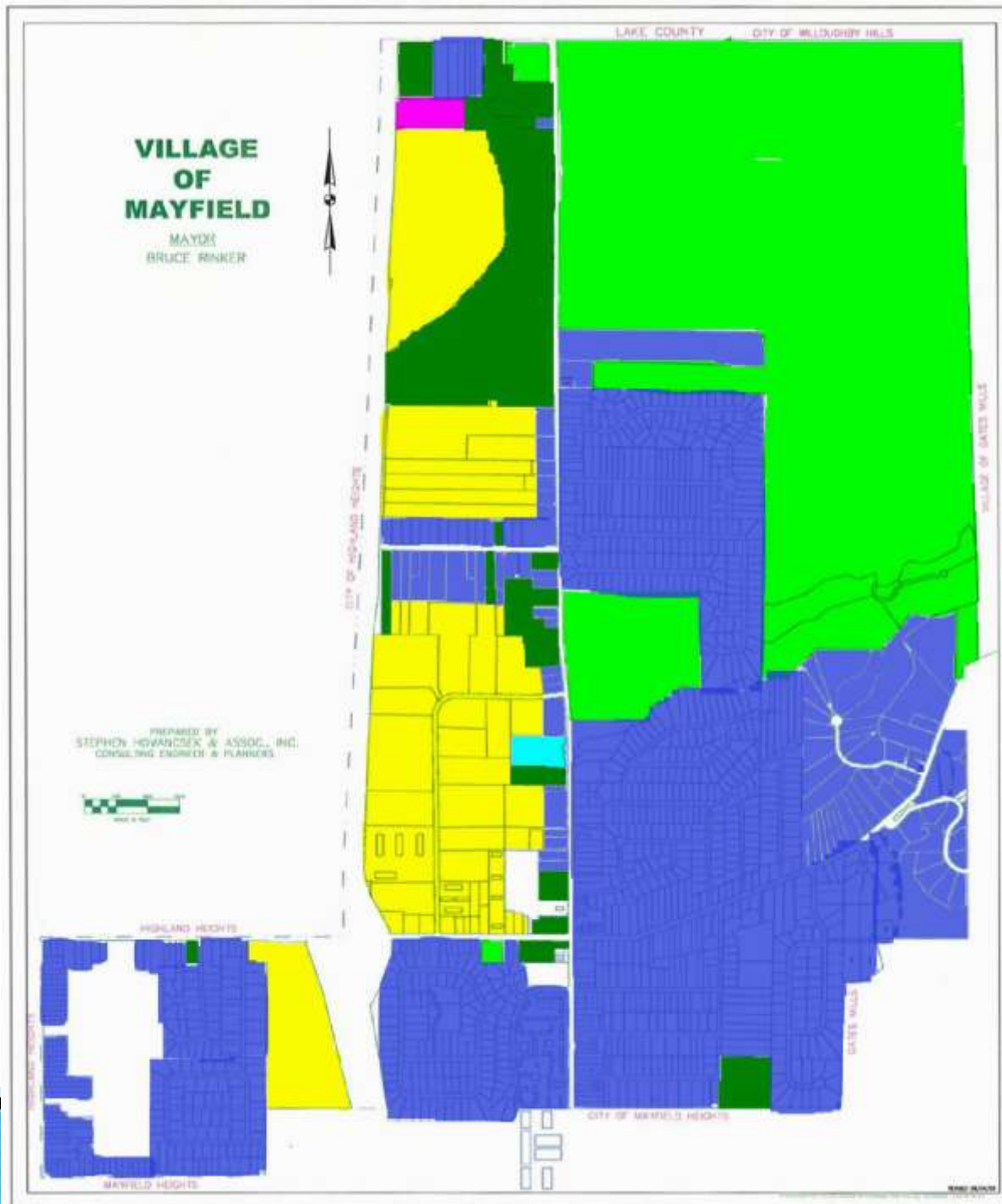
LAKE COUNTY

CITY OF WILLOUGHBY HILLS

VILLAGE OF GATES MILLS

GATES MILLS

CITY OF MAYFIELD HEIGHTS



Aerial

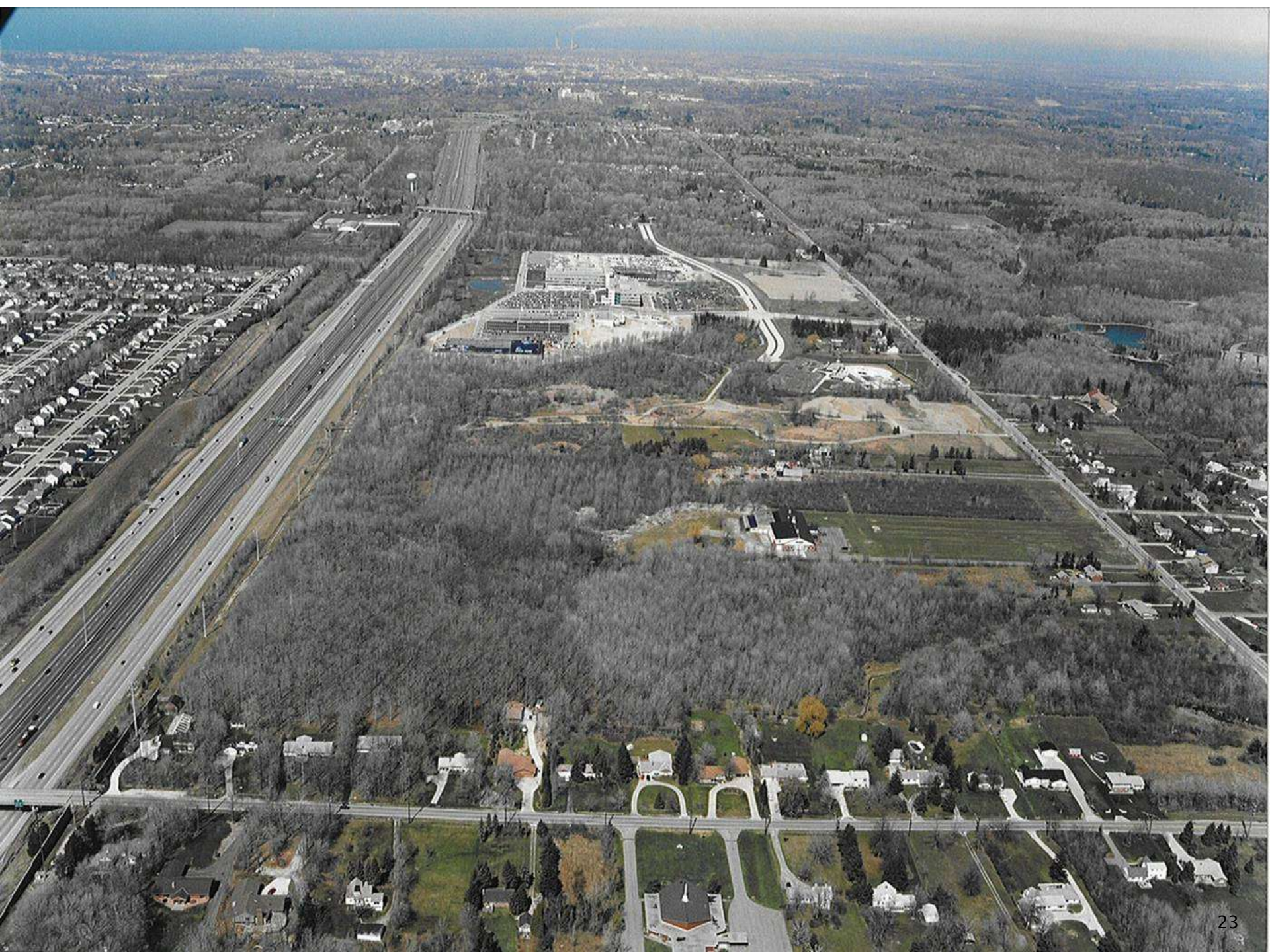


1997

Conceptual





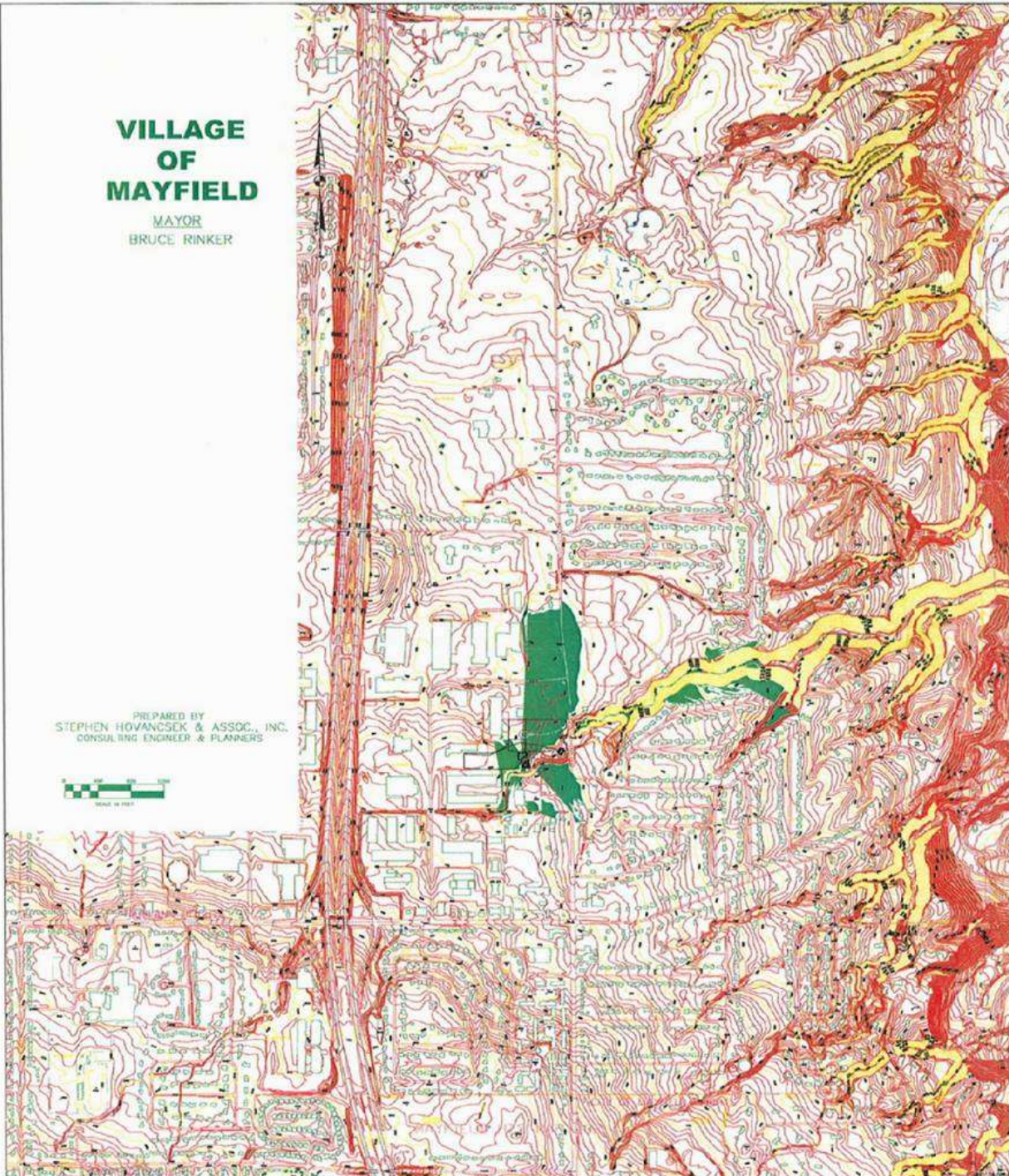




VILLAGE OF MAYFIELD

MAYOR
BRUCE RINKER

PREPARED BY
STEPHEN HOVANCSEK & ASSOC., INC.
CONSULTING ENGINEER & PLANNERS

















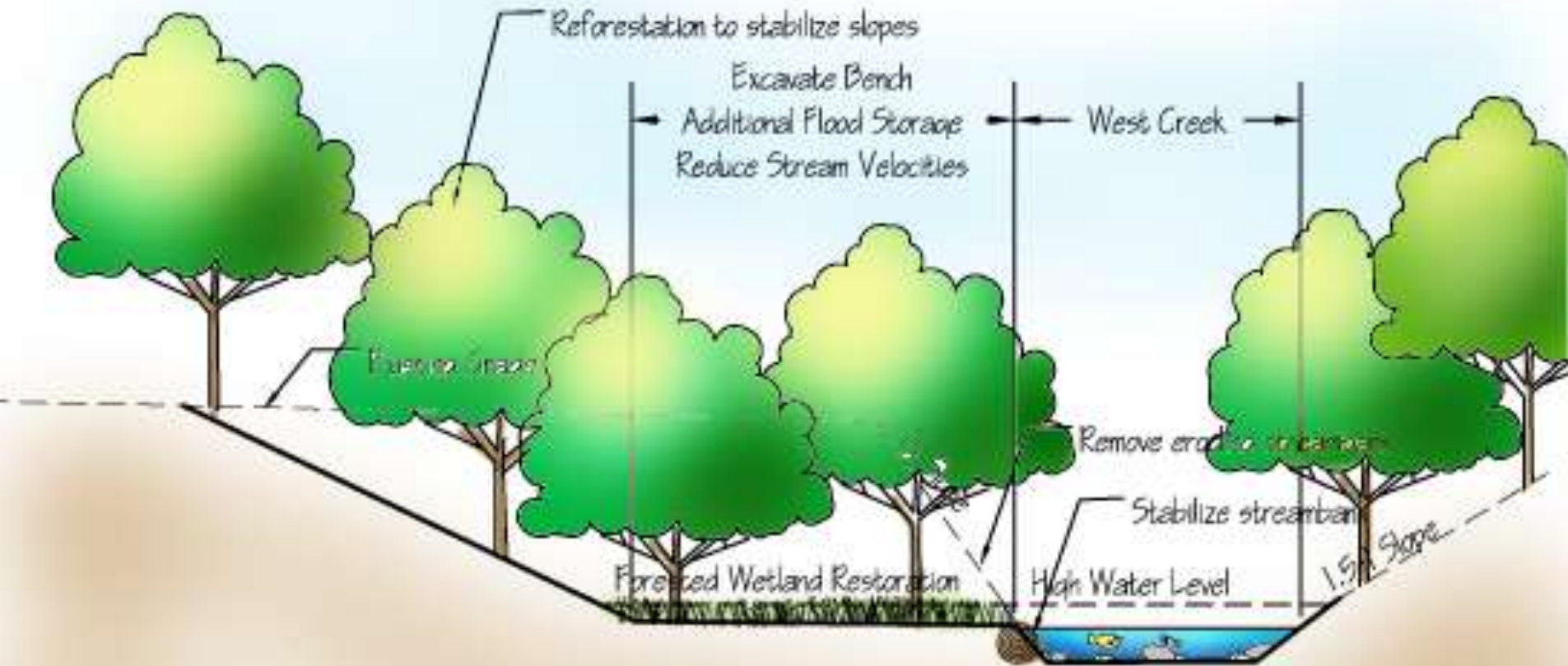
Upper 40 Stream Restoration

- ▶ URS provided multidiscipline services for the restoration of 2,000 lineal feet of the channelized Upper 40 tributary in Mayfield Village.
- ▶ Excavation of a floodplain at two locations adjacent to the formerly channelized stream has resulted in creation of over 8 acre/feet of storm water storage capacity. HEC RAS modeling indicates peak discharges are reduced by 35% thereby reducing downstream flooding and erosion. Steel weir plates on existing head walls provide a cost effective and unobtrusive means of flow reduction. HEC RAS modeling determined the size of the low flow opening and the elevation of the overflow on the weir plate installed on each head wall.
- ▶ Restored floodplains were extensively planted with a diverse array of native vegetation which is not only a attractive but also provides filtration of storm water pollutants.
- ▶ The pre existing stream was channelized.





Upper 40 Tributary Restoration



STREAM BENCHING CROSS SECTION







Upstream floodplain and wetland restoration in Mayfield Village



Downstream stream restoration in North Chagrin Reservation

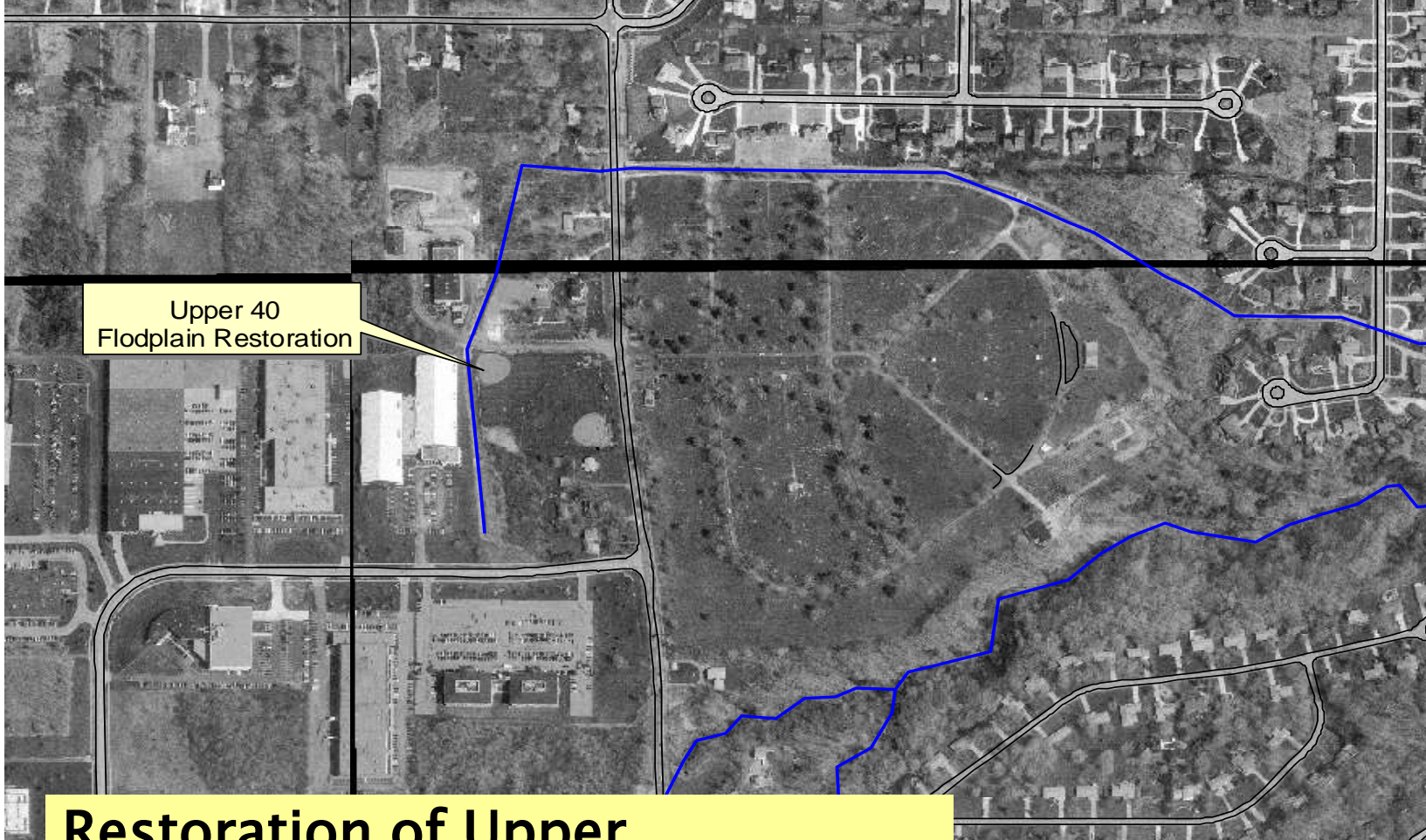




Mayfield Village Stream Projects



Champion Division
Water Pollution
Control



**Restoration of Upper
40/Foster's Run = \$2,000,000 in
Clean Ohio & Village \$\$.**

Goal of Restoration: Address 30 year
+ flooding and erosion problem
between Mayfield Village, Cleveland
Metroparks, and Village of Gates Mills.





Clean Ohio Conservation Fund

Bob Taft, Governor

FOSTERS RUN RIPARIAN RESTORATION
TOTAL PROJECT COST \$1,392,000.00

Mayfield Village Council

Bill Marquardt
Lillian Mills
Stephan Parker
Bill Buckholz
Joe Saponaro

Joanne Cinco
Thomas Marrie

Mayfield Village Mayor

Bruce G. Rinker

In partnership with
Cleveland Metroparks

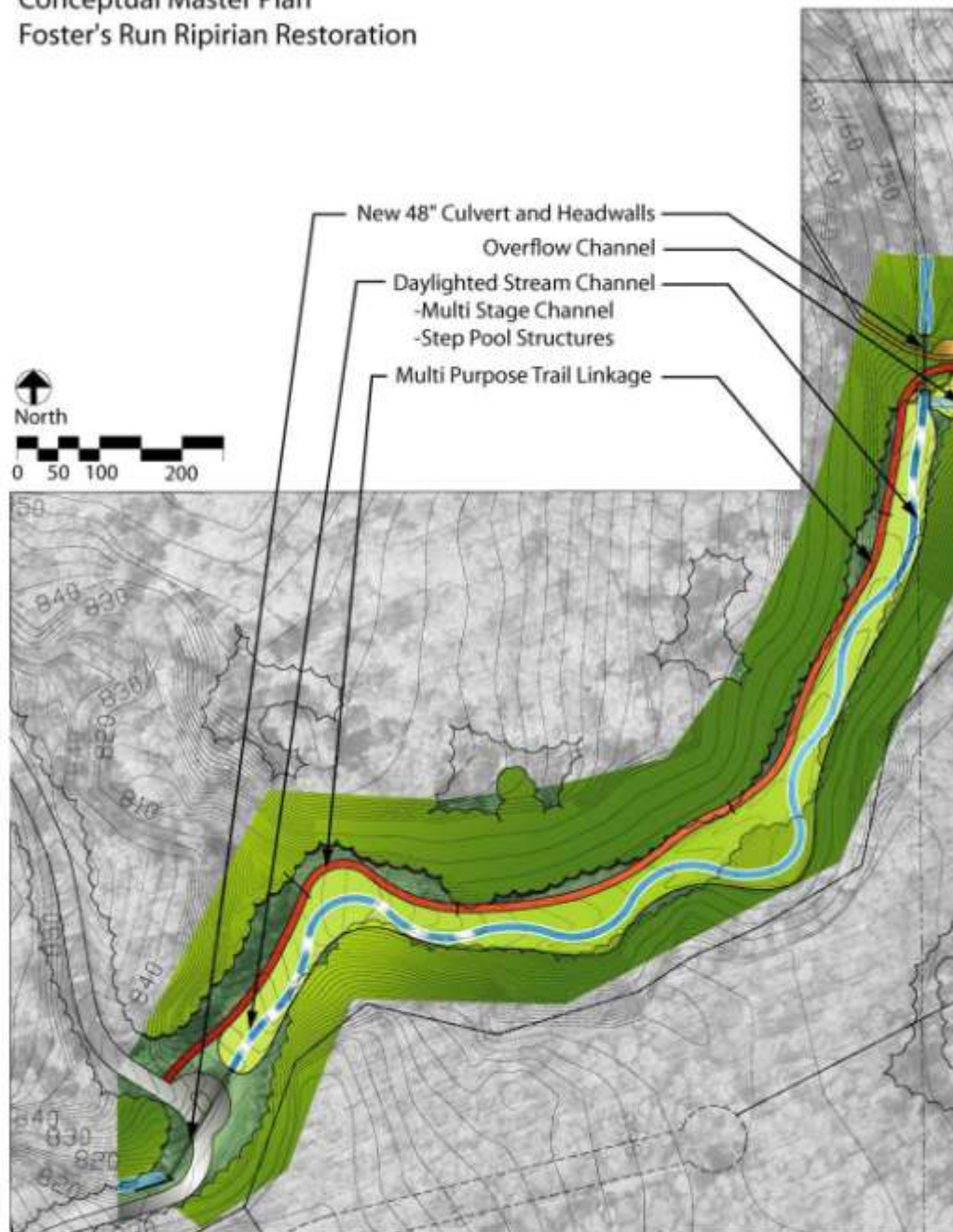
Vern J. Hartenburg, Executive Director

Contractor

Mark Haynes
Construction Inc.

Landscape Architect/Engineer
URS Corporation

Conceptual Master Plan Foster's Run Riparian Restoration

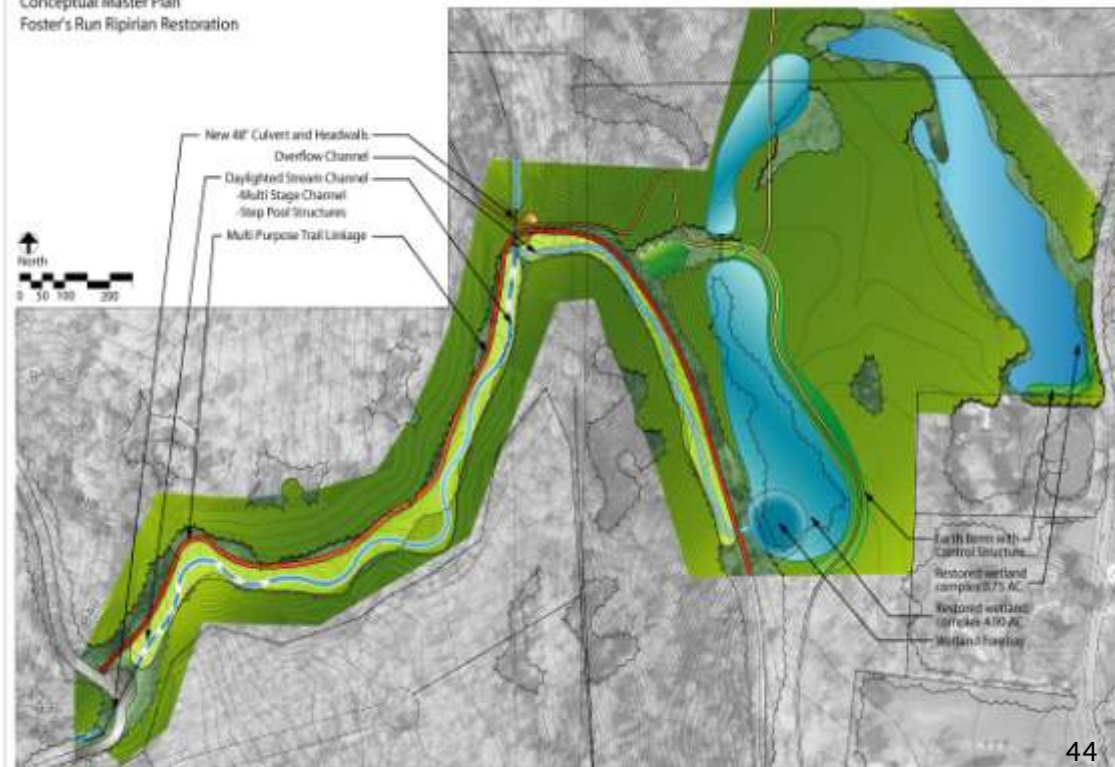


Upstream floodplain and wetland restoration in Mayfield Village



Downstream stream restoration in North Chagrin Reservation

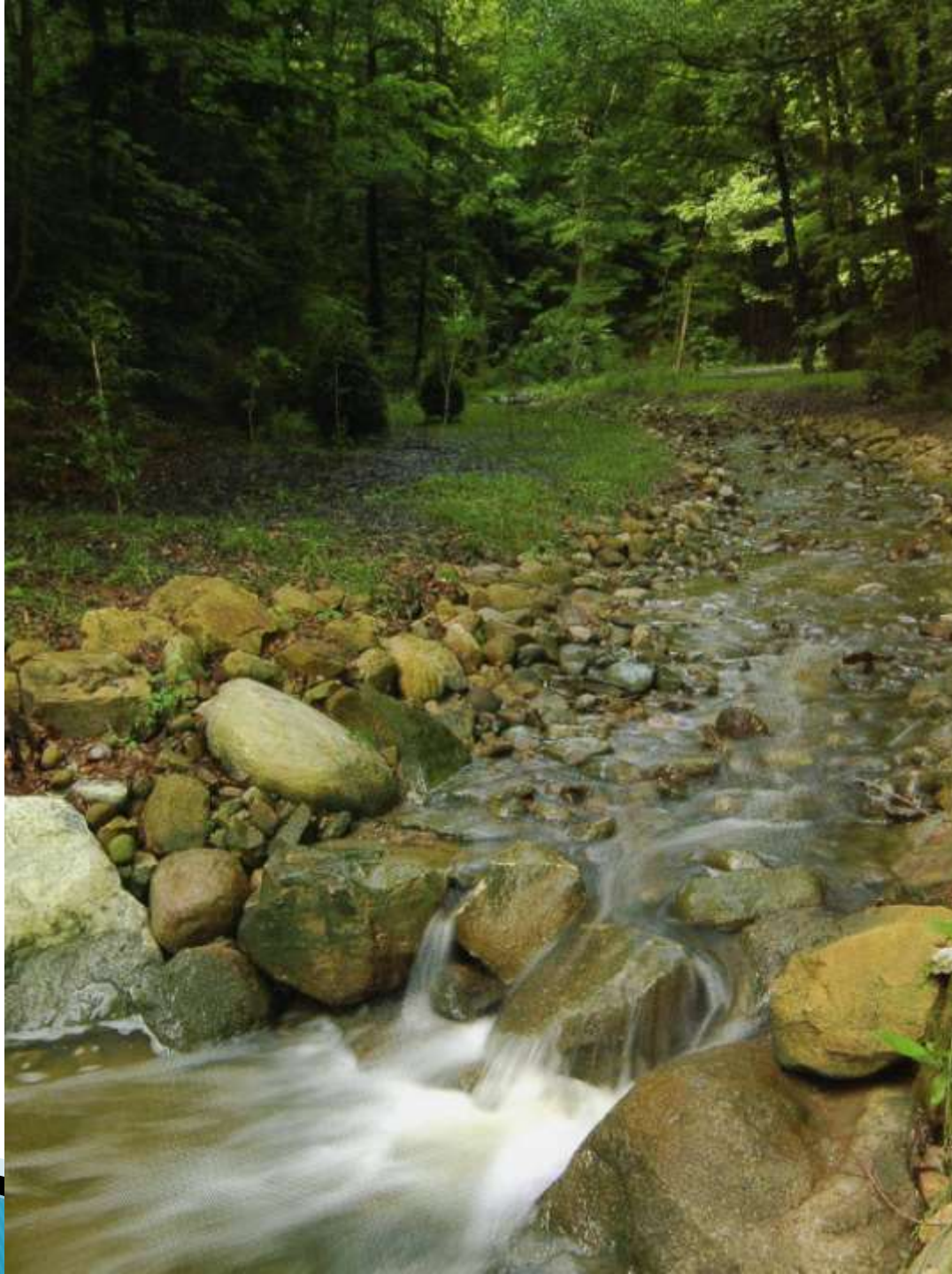
Conceptual Master Plan
Foster's Run Riparian Restoration



FOSTER'S RUN



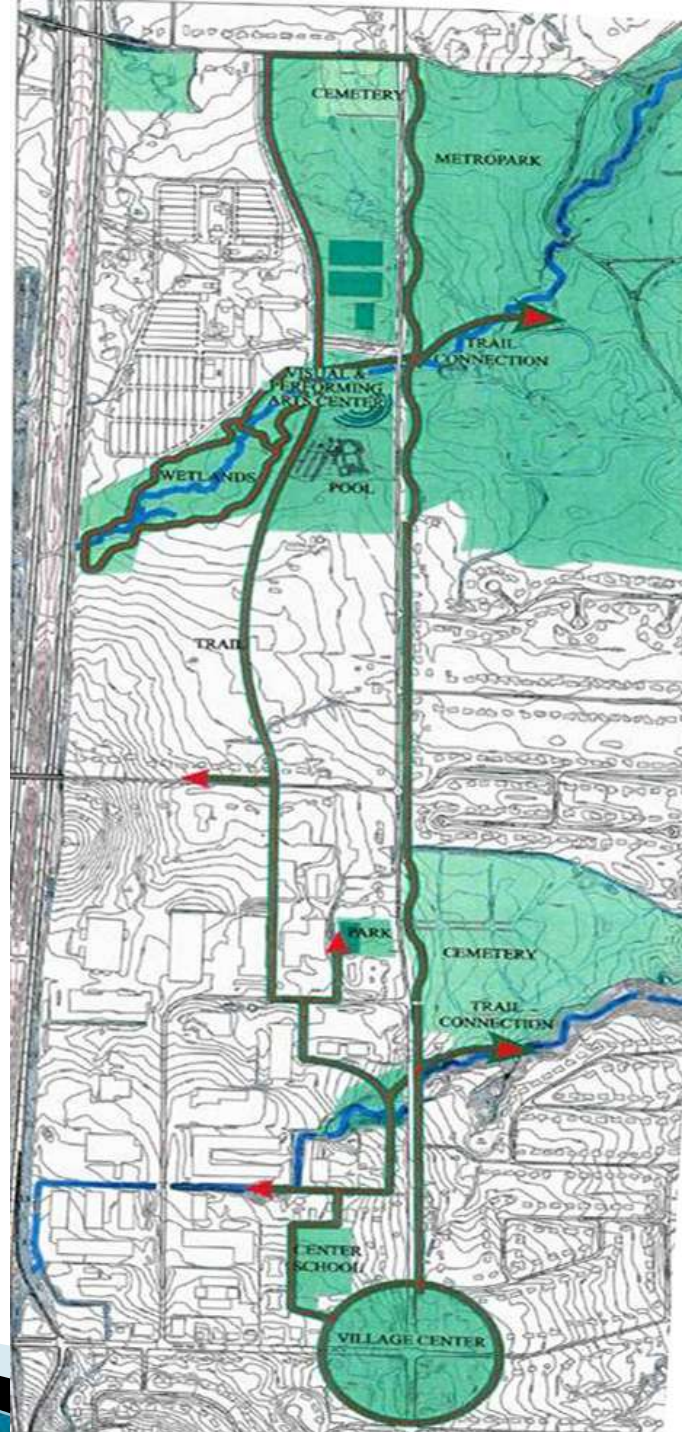














Plan Diagram
URS ARCHITECTS
ENGINEERS
PLANNERS



E View of North Village Entry at S.O.M. Center Rd.



D View of Underpass & S.O.M. Center Rd. near Parkview Pool



C View of Ravine, Underpass & S.O.M. Center Rd.



B View of Pedestrian Bridge



A View of "Center Green" behind Center School

Vignettes

The New Greenway MAYFIELD VILLAGE



© BONDY STUDIO











Northern Pedestrian Underpass near Parkview Pool





Ravine, Underpass & View of S.O.M. Center Road









S.O.M. Ctr Rd.

North Entry View Looking South





Mayfield Village Greenway Corridor



MAYFIELD VILLAGE GREENWAY CORRIDOR



See www.mayfieldvillage.com/recreation/greenway-trail for additional information and for updated photos during construction.

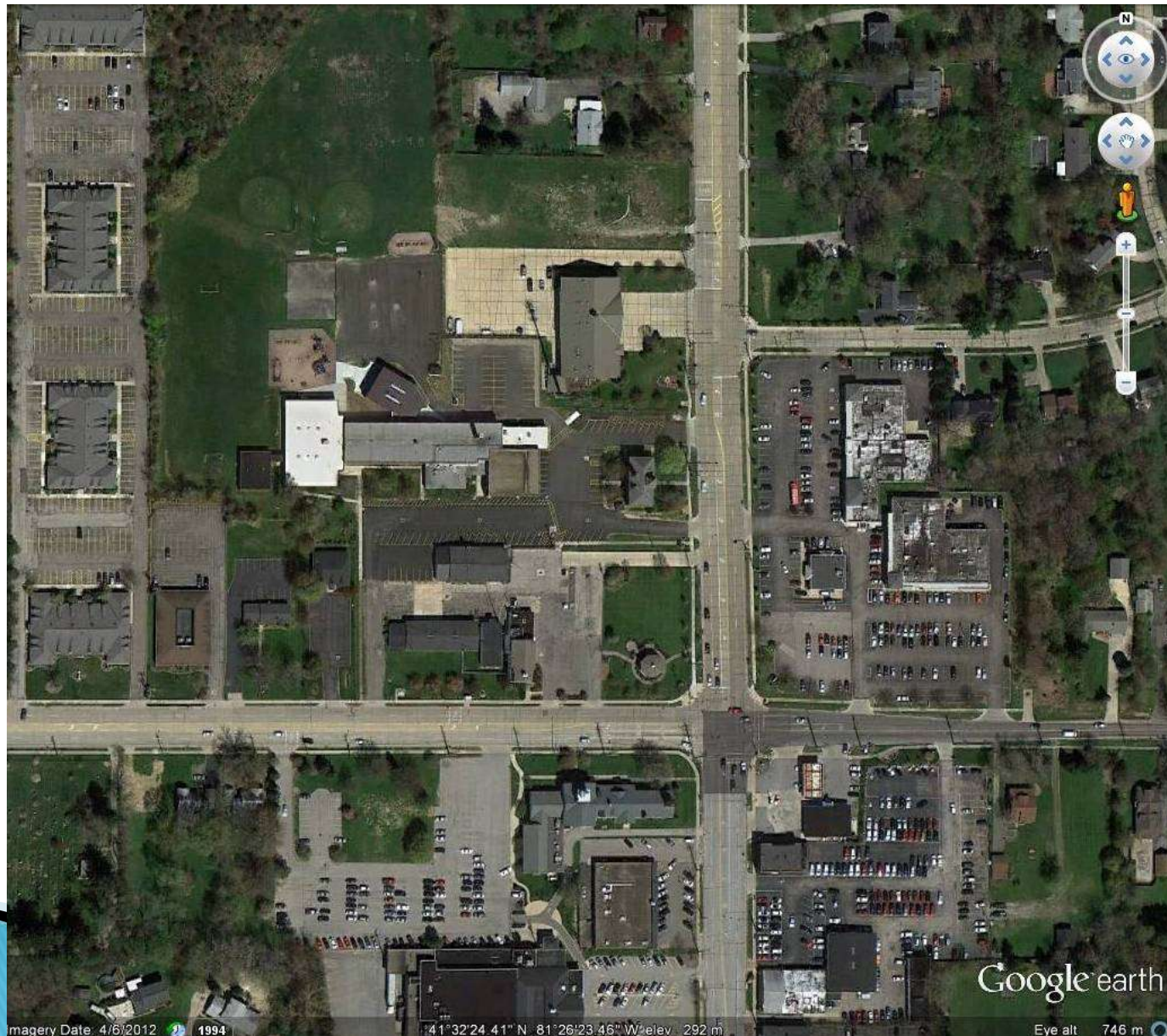
EXISTING VILLAGE TRAIL SYSTEM
FUTURE VILLAGE TRAIL SYSTEM
FUTURE VILLAGE TRAIL SYSTEM (ALTERNATE ROUTE)

- | | | |
|--|---|--|
| 1 2004 illustration of Center School green. | 5 Approaching Sunset Creek bridge. | 8 SOM Center underpass to North Chagrin Reservation. |
| 2 Rendering of future bridge spanning Beechers Brook. | 6 Site of future Mayfield Library branch. | 9 Site of future amphitheatre. |
| 3 At Willey Park, looking south. | 7 Bridge spanning stream, built by Service Dept. | 10 Soccer fields in front of Progressive's Campus II. |
| 4 North of Service Department site. | | |





Town Center 2012





Town Center Conceptual



Delightful Associates Inc.
 4000 Main Road
 Suite 100
 Mayfield Heights, Ohio 44130
 216.771.4400
 216.771.4400
 www.delightful.com



Schematic Plan
Village Green Expansion

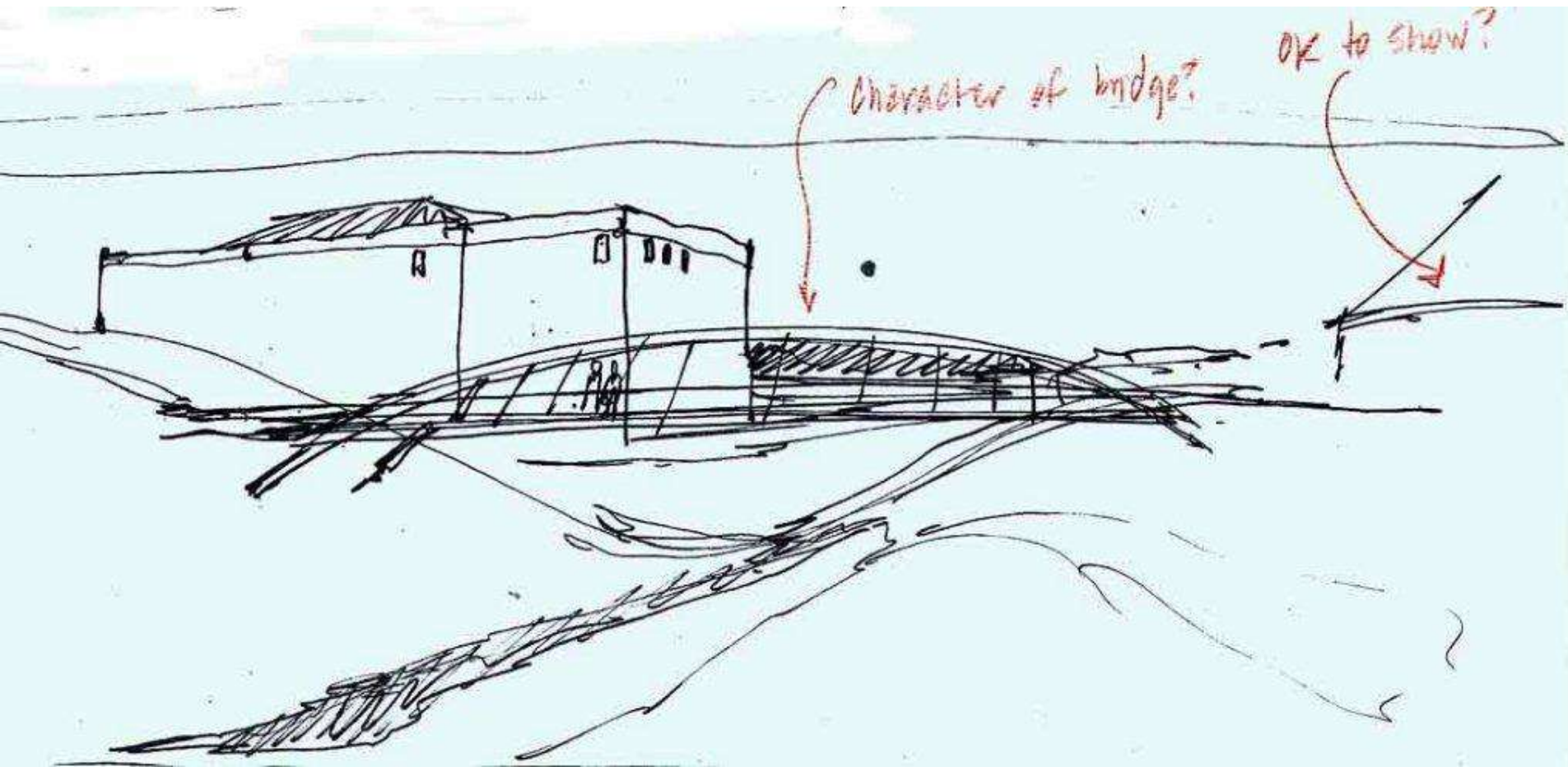
Wilson Mills & S.O.M. Center Roads, Mayfield Village, Ohio

May 17, 2012



Mayfield Village Greenway







View of pedestrian bridge along Greenway trail

Mayfield Village

PRESTON
ENGINEERS
PLANNERS

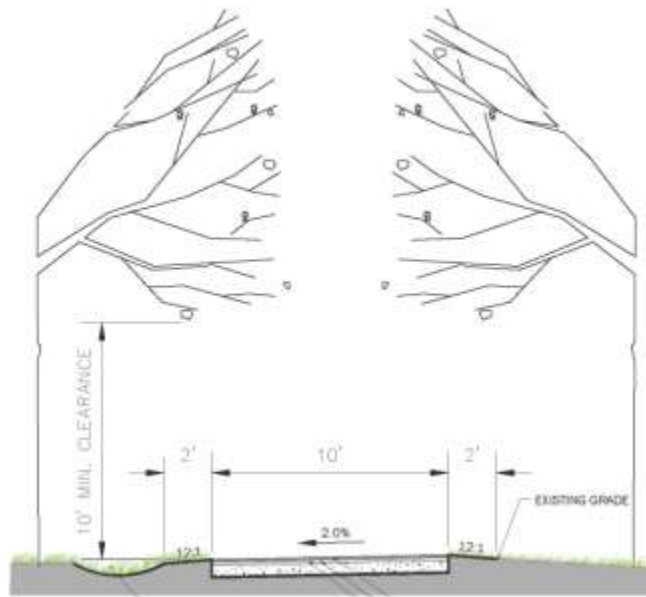




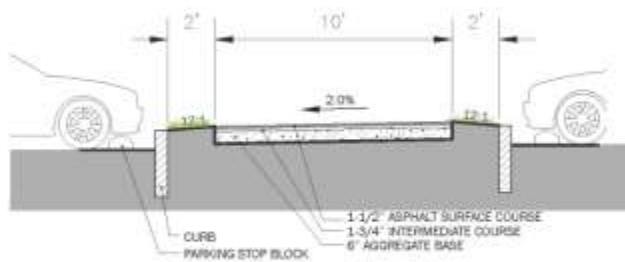




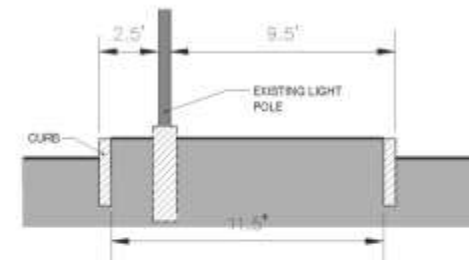




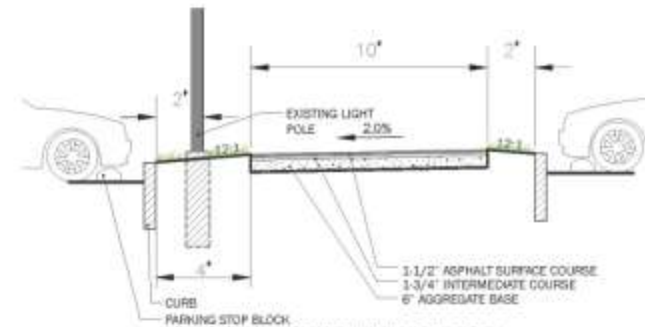
STANDARD PATH SECTION



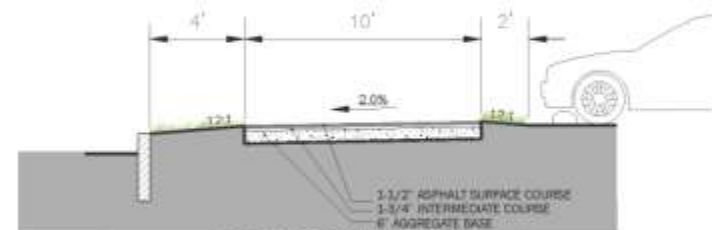
PATH WITH CURBS SECTION



EXISTING PANZICA PARKING LOT SECTION



PARKING LOT SECTION WITH LIGHT POLE

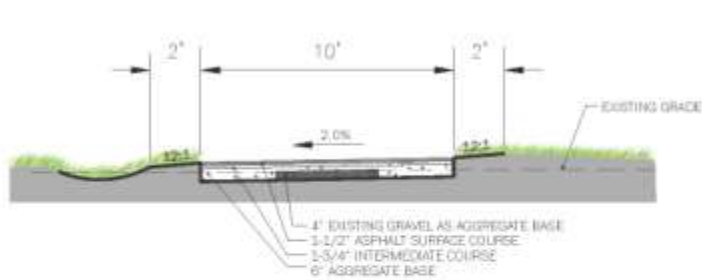


PARKING LOT SECTION WITH CURB

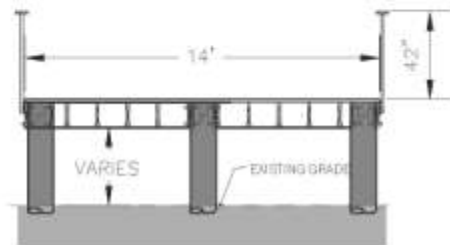
Mayfield Village Greenway Trail - Alignment Analysis

Typical Sections

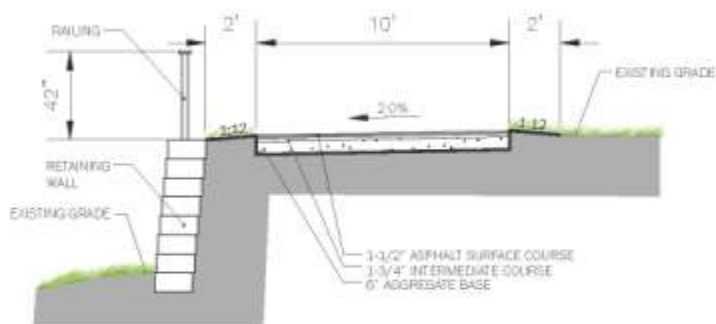
URS



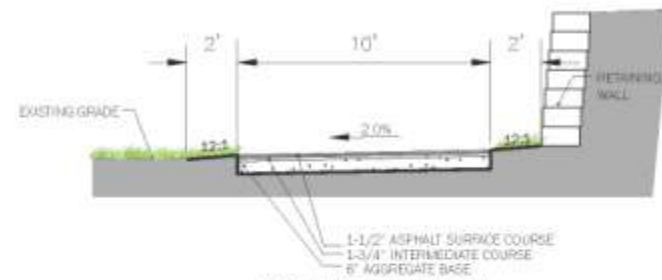
PATH WITH EXISTING GRAVEL PATH



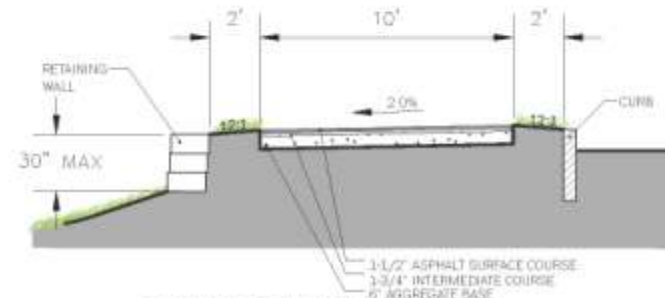
PATH OVER BOARDWALK



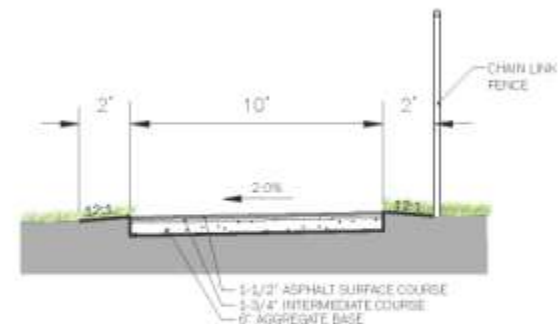
PATH WITH RETAINING WALL



PATH WITH RETAINING WALL



PATH WITH RETAINING WALL AND CURB

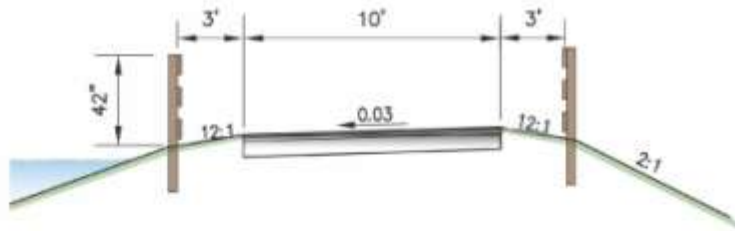


PATH WITH CHAIN LINK FENCE

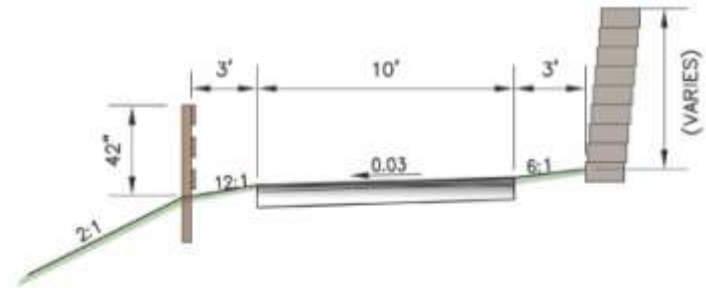
Mayfield Village Greenway Trail - Alignment Analysis

Typical Sections

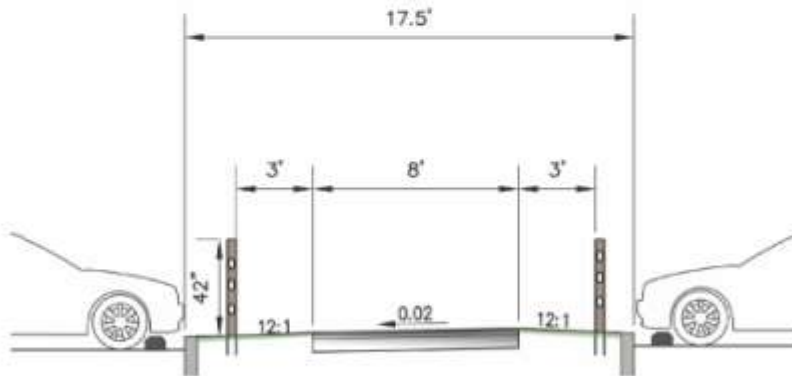
URS



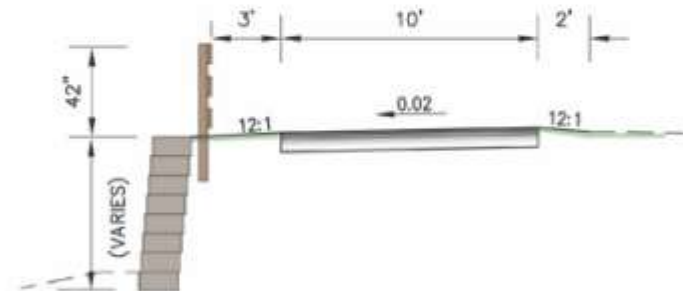
Adjacencies to Bodies of Water



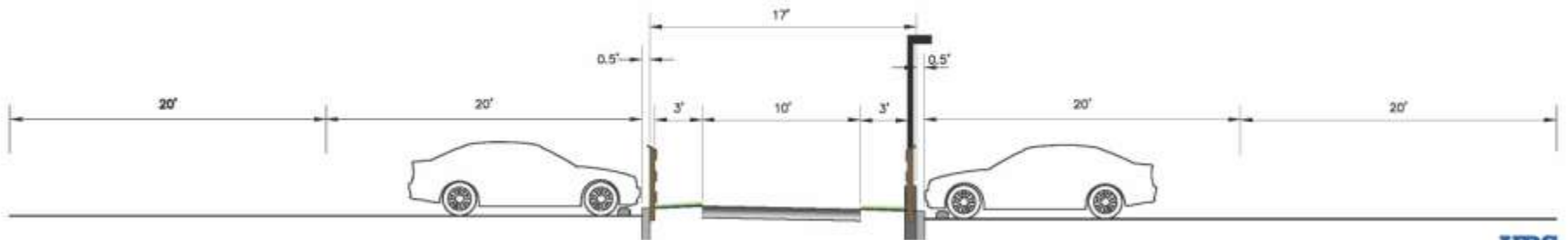
Side Slopes Equal to or Greater than 2:1



Vehicular Use Adjacent to Trail w/ Minimal Separation



Descending Retaining Wall



Mayfield Village Greenway Trail -
Progress Review Meeting - 7.21.11

Alignment Area: **A-7**





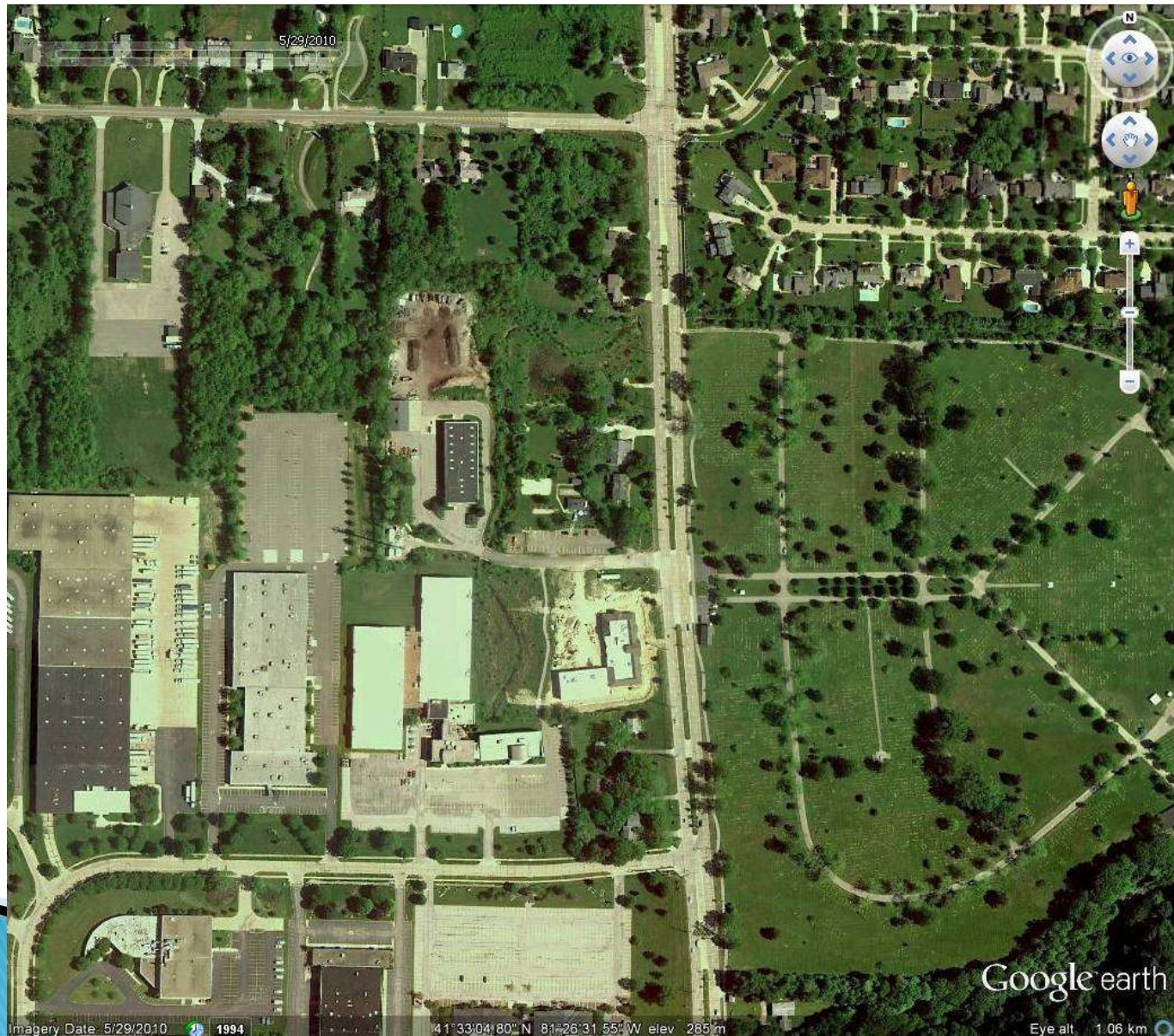
Wiley Park (2001)



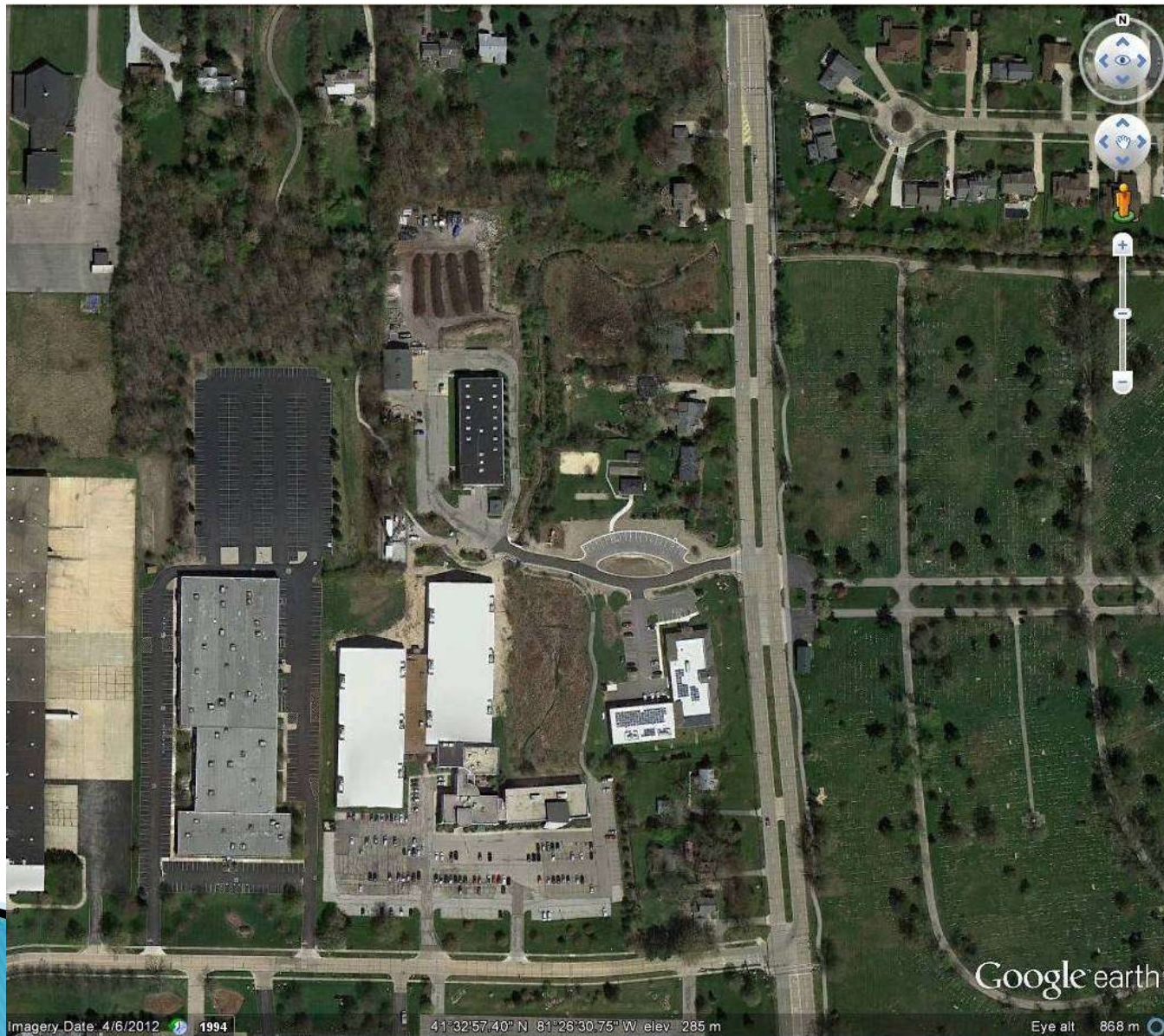
Wiley Park (2007)



Wiley Park (2010)



Wiley Park 2012















A photograph of a two-story white historical house with a grey roof and a brick chimney. The house is set on a green lawn with several trees, some of which are bare and others with green leaves. In the foreground, a white signpost holds a sign that reads "Mayfield Township Historical Society HISTORIC HOUSE 1847" and lists nearby locations: "MAYFIELD VILLAGE - MAYFIELD HTS.", "HIGHLAND HTS. - GATES MILLS". An American flag is visible on a pole to the right of the house.

Mayfield Township
Historical Society

**HISTORIC
HOUSE**

1847

MAYFIELD VILLAGE - MAYFIELD HTS.
HIGHLAND HTS. - GATES MILLS



X OF X













New Wiley Playground Conceptual







H. DAVID HOWE JR. ARCHITECTS, INC.
3787 S. GREEN RD.
BEACHWOOD, OHIO 44122
216-292-5497













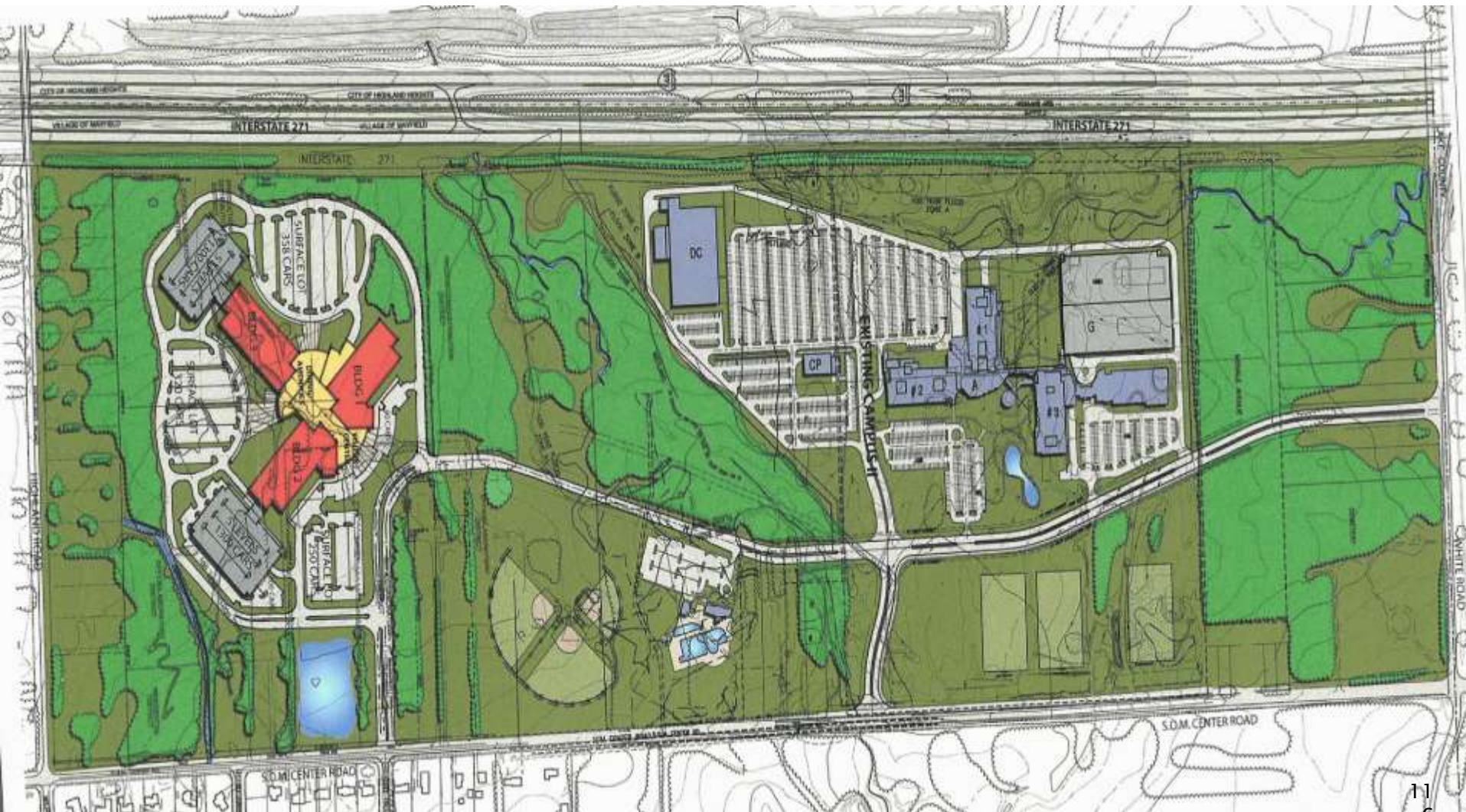




North Commons

2005-2012

Current and Projected







Cuyahoga County Public Library

city hall
fire station
underpass
police station
service department
underpass
library
ball fields
wetland park
pool
underpass
amphitheater
metroparks



city hall

fire station

underpass

police station

service department

underpass

library

ball fields

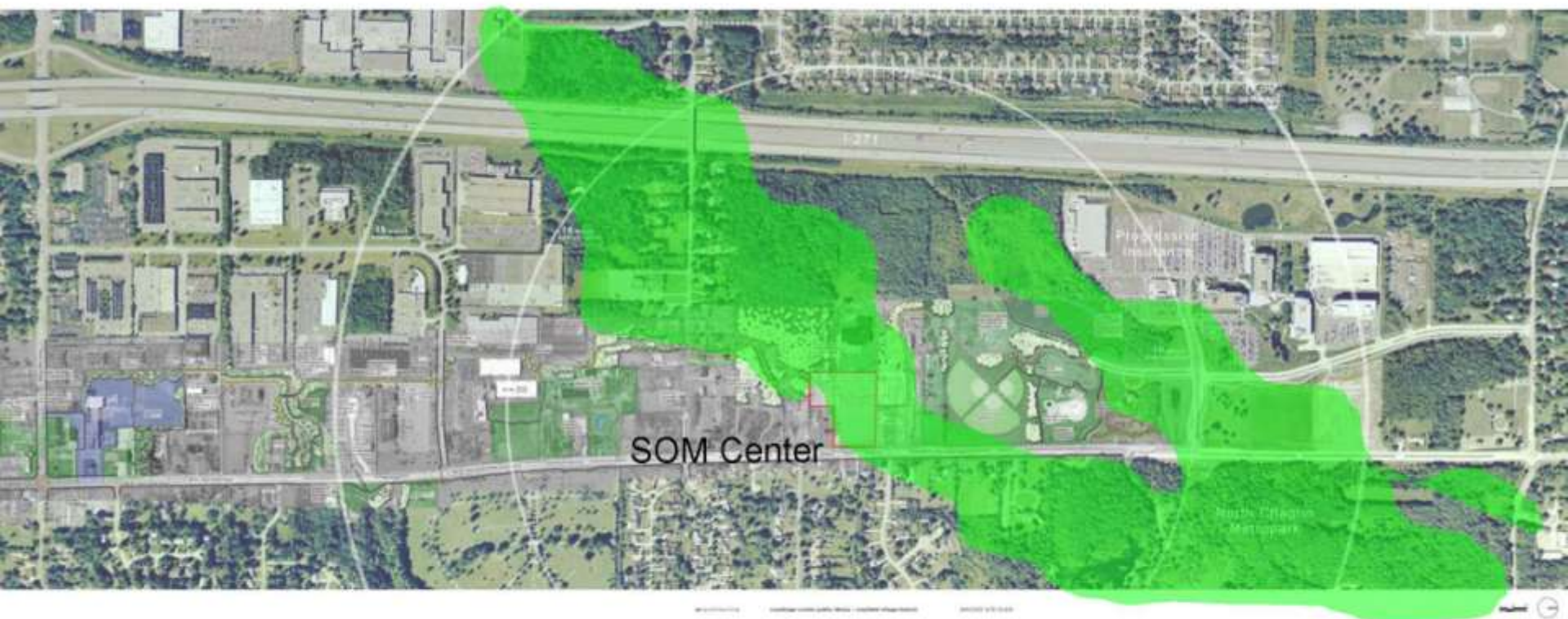
wetland park

pool

underpass

amphitheater

metroparks



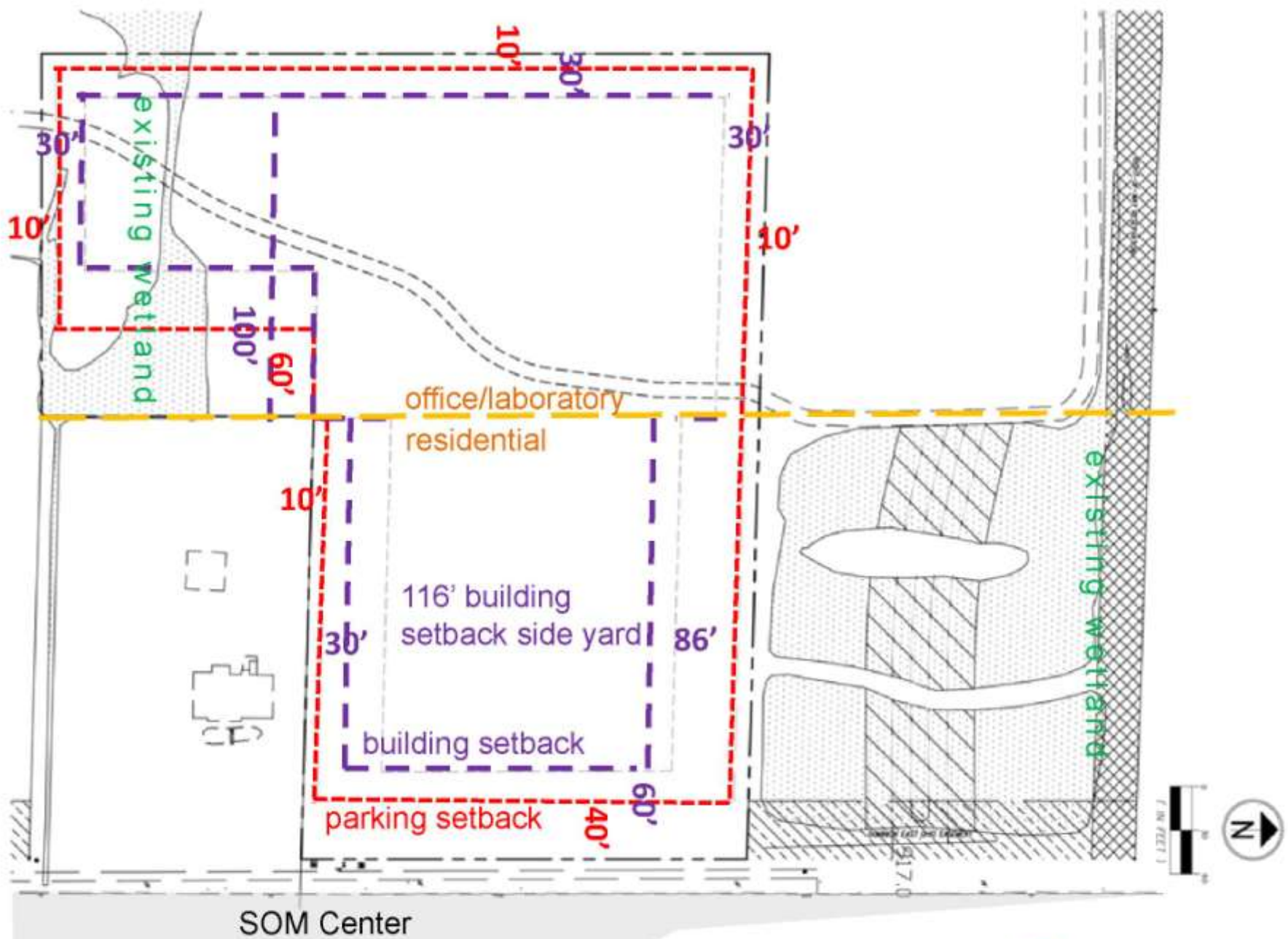
CCPL Mayfield Branch Library

urs architecture + hbm architects

2.06.2012 Mayfield Village Council Presentation



Cuyahoga County Public Library
browsing is just the beginning



SOM Center

CCPL Mayfield Branch Library
 urs architecture + hbm architects
 2.06.2012 Mayfield Village Council Presentation



Cuyahoga County Public Library
 browsing is just the beginning

SITE PLAN











Groundbreaking May 2nd, 2012







Opening Fall 2013



CCPL Mayfield Branch Library
urs architecture + hbm architects
2.06.2012 Mayfield Village Council Presentation



Cuyahoga County Public Library
browsing is just the beginning

Wetlands















Parkview Pool & Ballfields















MAYFIELD VILLAGE

14.10.2005 13:55

































Q (?) and A (.)

- ▶ *Trails and Greenways and Placemaking*
- ▶ Mayor Bruce Rinker, Mayfield Village